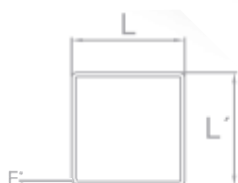


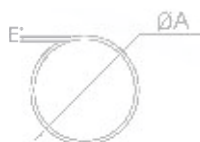
SUVISUR

BARANDILLAS, PINZAS Y HERRAJES
INOXIDABLE



Tubo cuadrado - AISI 316

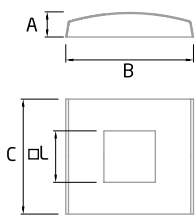
Balaustre Inox	L	L'	E*	Largo	Acabado
100123JF	40	40	1,5	1000	Brillo
100113JF	40	40	1,5	1000	Satinado



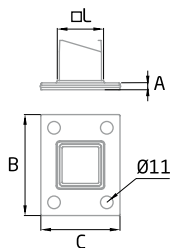
Tubo redondo - AISI 316

Balaustre Inox	ØA	E*	Largo	Acabado
100105JF	43	1,5	1000	Brillo
100110JF	43	1,5	1000	Satinado
100111IC	50	1,5	1000	Brillo
100292IC	50	1,5	1000	Satinado





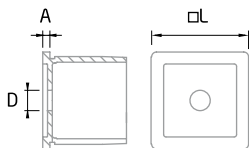


AV-660 AISI-316					BA	SATIN
	□ L	A	B	C		
2	40x40	18	100	90		
2	50x50	18	100	90		



BS-10 AISI-316						BA	SATIN
	□ L	A	B	C	E*		
2	40x40	6	88	69	1,5		

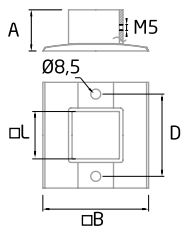




ST-333 AISI-316					BA	SATIN
	□ L	A	D	E*		
2	40x40	3	8,5	1,5		

DIN 7981 Ø 6,3 L60 (Brico Pag. 135)

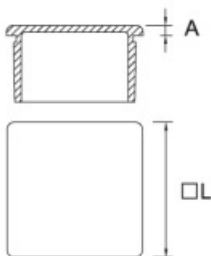
BR-2087 (Brico Pag. 140)



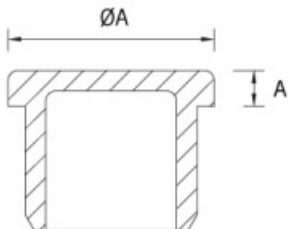
AV-610 AISI-316					BA	SATIN
	□ L	A	□ B	D		
2	40x40	35	90	70		

DIN 7981 Ø 6,3 L60 (Brico Pag. 135)

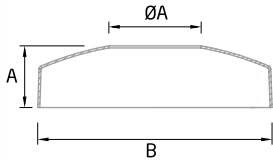
BR-2087 (Brico Pag. 140)



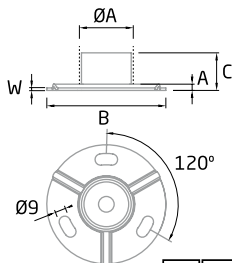
TF-530				
--------	--	--	--	--





TF-502				
--------	--	--	--	--

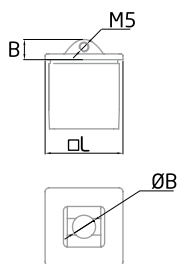


AV-650 AISI-316				BA	SATIN
	øA	A	B		
4	20	11,5	55		
2	38,1	22,5	99		
2	40	22,5	99		
2	43	22,5	99		
2	50,8	22,5	99		
2	63,5	24	110		



BS-00 AISI-316							BA	SATIN
	øA	A	B	C	E*	W		
2	38,1	5	95	35	1,5	4		
2	43	5	95	35	1,5	4		
2	50,8	5	95	35	1,5	4		

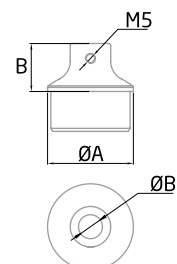




SA-440 AISI-316

BA SATIN

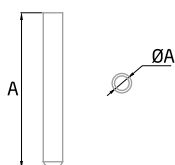
	L	ØB	A	E*
2	40x40	12	10	1,5
2	50x50	12	12	1,5



SA-420 AISI-316

BA SATIN

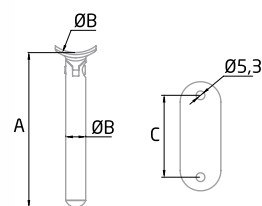
	ØA	ØB	A	E*
2	43	12	24	1,5
2	50,8	12	25	1,5



BF-00 AISI-316

BA SATIN

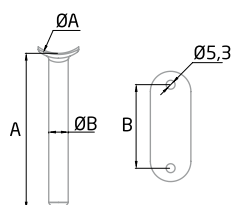
	ØA	A
2	12	96



BG-R AISI-316

BA SATIN

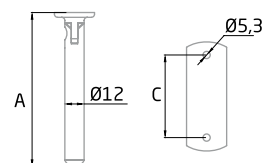
	ØA	ØB	A	C
2	43	12	97	51,5
2	50,8	12	97	61,5



BF-R AISI-316

BA SATIN

	ØA	ØB	A	B
2	43	12	96	51,5
2	50,8	12	96	61,5

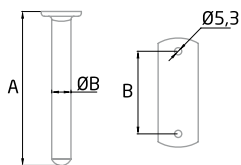


BG-FLAT AISI-316

BA SATIN

	ØB	A	C
2	12	96	51,5

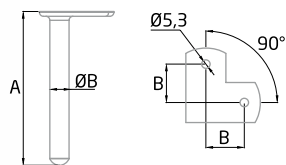




BF-FLAT AISI-316

BA SATIN

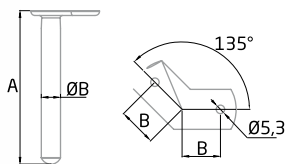
	ØB	A	B
2	12	96	51,5



BFC-FLAT 90 AISI-316

BA SATIN

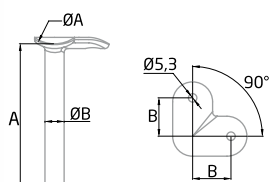
	ØB	A	B
2	12	96	24



BFC-FLAT 135 AISI-316

BA SATIN

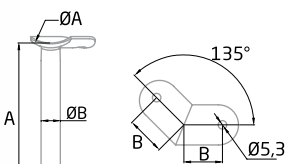
	ØB	A	B
2	12	96	24



BFC-R 90 AISI-316

BA SATIN

	ØA	ØB	A	B
2	43	12	96	24
2	50,8	12	96	24



BFC-R 135 AISI-316

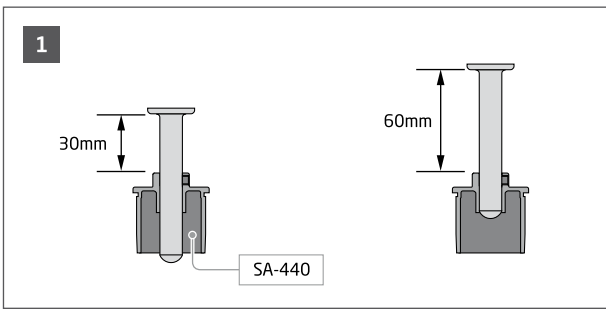
BA SATIN

	ØA	ØB	A	B
2	43	12	96	24
2	50,8	12	96	24

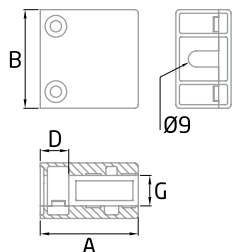



Instalación

SA-440







CC-724 AISI-316

	A	B	D	G
4	45	45	16	(6-10,76)

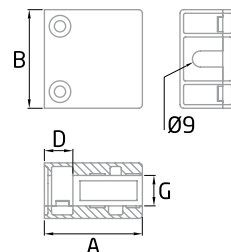

BA

SATIN

DIN-912 M-8 L-20 (Brico Pag. 134)

BR-2011 M-8 (Brico Pag. 135)





CC-726 AISI-316

	A	B	D	G
4	55	55	16	(12-16,76)

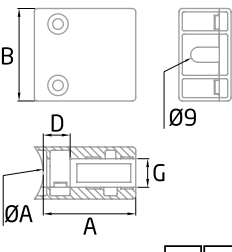

BA

SATIN

DIN-912 M-8 L-20 (Brico Pag. 134)

BR-2011 M-8 (Brico Pag. 135)





CC-725 AISI-316

	øA	A	B	D	G
4	43	45	45	16	(6-10,76)

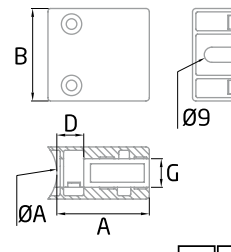

BA

SATIN

DIN-912 M-8 L-20 (Brico Pag. 134)

BR-2011 M-8 (Brico Pag. 135)





CC-727 AISI-316

	øA	A	B	D	G
4	50,8	55	55	12	(12-16,76)

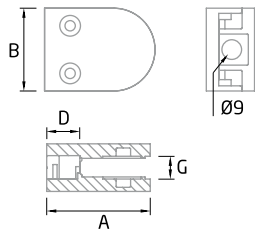
BA

SATIN

DIN-912 M-8 L-20 (Brico Pag. 134)

BR-2011 M-8 (Brico Pag. 135)





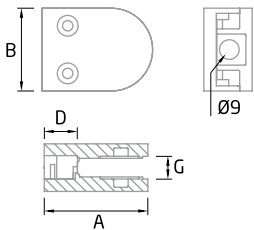
CC-700 AISI-316



	A	B	D	G
4	50	40	16	(6-8)
4	50	40	16	(8-10)
4	50	40	16	(10-12)

DIN-912 M-8 L-20 (Brico Pag. 134)

BR-2011 M-8 (Brico Pag. 135)



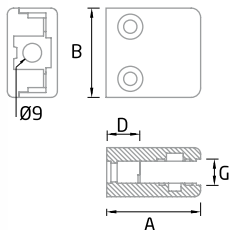
CC-702 AISI-316



	A	B	D	G
4	60	55	15,5	(12-16,76)

DIN-912 M-8 L-20 (Brico Pag. 134)

BR-2011 M-8 (Brico Pag. 135)



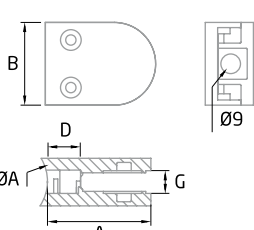
CC-720 AISI-316



	A	B	D	G
4	44	44	16	(8-10)

DIN-912 M-8 L-20 (Brico Pag. 134)

BR-2011 M-8 (Brico Pag. 135)



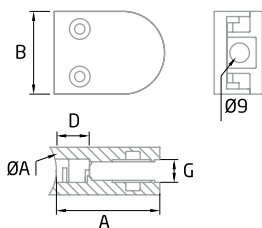
CC-701 AISI-316



	øA	A	B	D	G
4	43	50	40	16	(6-8)
4	50,8	50	40	16	(6-8)
4	43	50	40	16	(8-10)
4	50,8	50	40	16	(8-10)
4	43	50	40	16	(10-12)
4	50,8	50	40	16	(10-12)

DIN-912 M-8 L-20 (Brico Pag. 134)

BR-2011 M-8 (Brico Pag. 135)



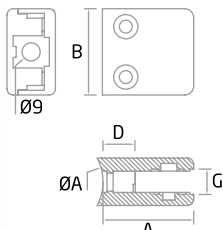
CC-703 AISI-316



	øA	A	B	D	G
4	43	60	55	15,5	(12-16,76)
4	50,8	60	55	15,5	(12-16,76)

DIN-912 M-8 L-20 (Brico Pag. 134)

BR-2011 M-8 (Brico Pag. 135)



CC-721 AISI-316

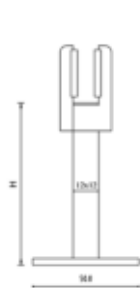


	øA	A	B	D	G
4	43	44	44	16	(8-10)
4	50,8	44	44	16	(8-10)

DIN-912 M-8 L-20 (Brico Pag. 134)

BR-2011 M-8 (Brico Pag. 135)





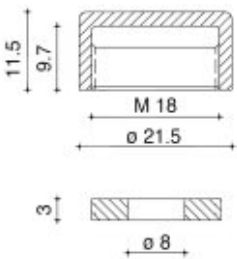
Pinza con base

AISI316	Altura
100082CB	60 mm
100081CB	80 mm
100080CB	100 mm



Pinza con base ciega

AISI316	Altura
100083CB	60 mm
100084CB	80 mm
100085CB	100 mm



Conjunto embellecedor para tornillos con arandela

	Calidad
100086CB	AISI304

Conjunto embellecedor para tornillos con arandela

	Calidad
100087CB	AISI316





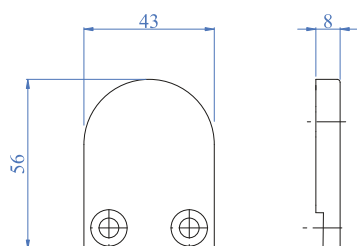
AISI316	Espesor A	Acabados
100557IN	Ø 8 mm	Satinado
100081IN	Ø 8 mm	Brillo



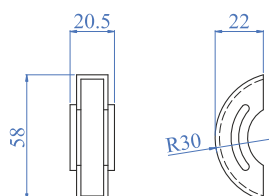
AISI316	Diámetro tubo
100555IN	Ø 42,4 mm
100556IN	Superficie plana



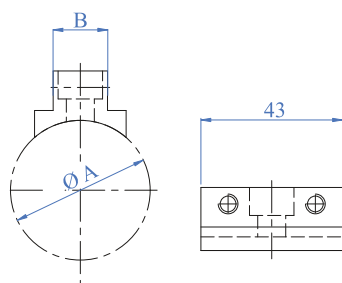
RUBBER	Nº piezas por set	Espesor vidrio
100077IN	2	8,76 mm
100080IN	2	10 mm
100594IN	2	10,76 mm
100559IN	2	12,76 mm



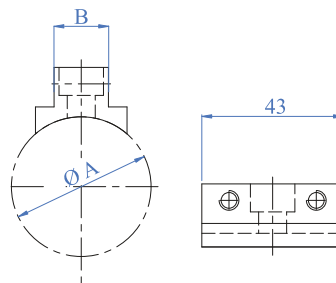
AISI304	AISI316	Espesor
100560IN	100078IN	Variable



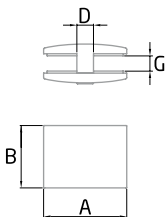
AISI316	Acabado
100076IN	Satinado
100082IN	Brillo



AISI316	Diámetro por tubo	Espesor B
100085IN	Superficie plana	16,76-17,52 mm
100566IN	Ø 42,4 mm	16,76-17,52 mm
100079IN	Superficie plana	20,76-21,52 mm
100567IN	Ø 42,4 mm	20,76-21,52 mm

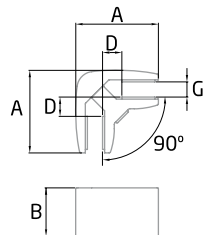


AISI316	Diámetro por tubo	Espesor B
100562IN	Ø 42,4 mm	8-8,76 mm
100563IN	Superficie plana	10-10,76 mm
100564IN	Ø 42,4 mm	10-10,76 mm
100086IN	Superficie plana	12-12,76 mm
100565IN	Ø 42,4 mm	12-12,76 mm



CC-736 AISI-316

	A	B	D	G	BA	SATIN
2	60	45	12	(8-13,52)		
2	60	45	12	(15-21,52)		



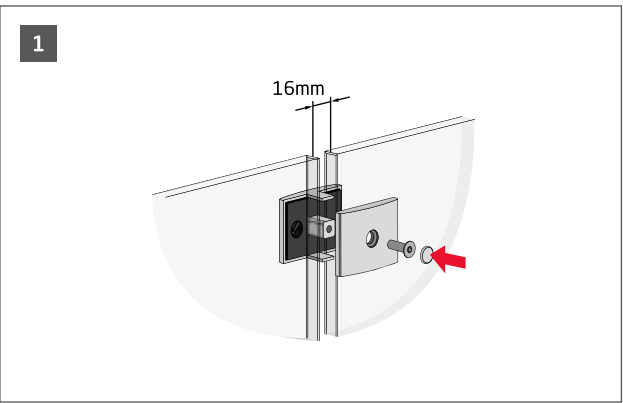
CC-737 AISI-316

	A	B	D	G	BA	SATIN
2	60	35	14	(8-13,52)		
2	60	35	14	(15-21,52)		



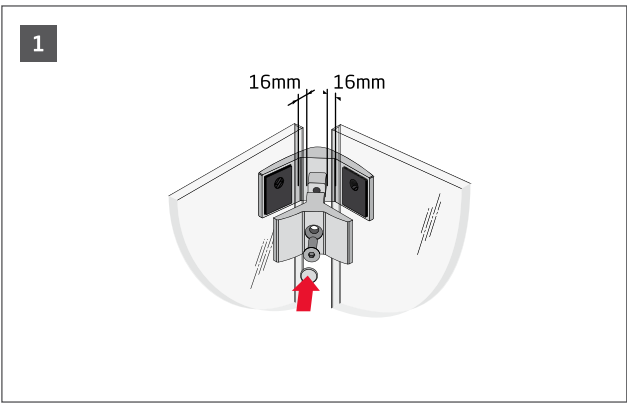
Instalación

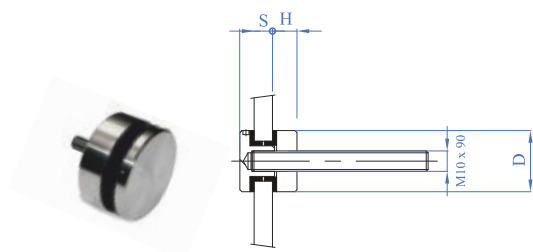
CC-736



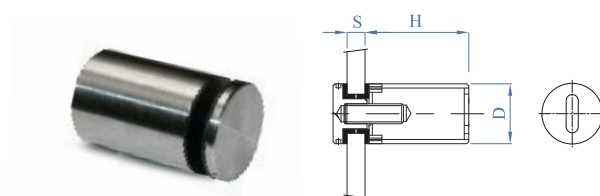
Instalación

CC-737

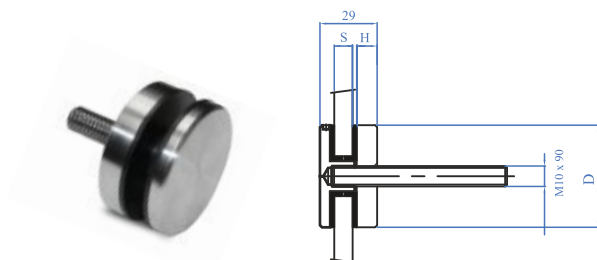




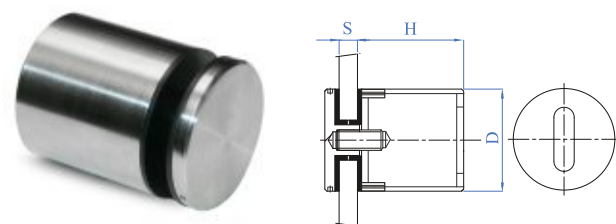
AISI304	AISI316	H	Diámetro D	Espesor S
100110IN	100568IN	10 mm	Ø 30 mm	8 - 16,76 mm



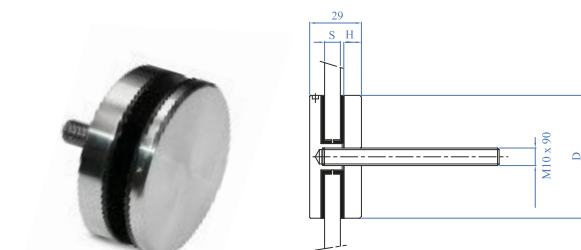
AISI304	AISI316	H	Diámetro D	Espesor S
100108IN	100569IN	40 mm	Ø 30 mm	8 - 16,76 mm
100570IN	100571IN	50 mm	Ø 30 mm	8 - 16,76 mm
100572IN	100573IN	60 mm	Ø 30 mm	8 - 16,76 mm



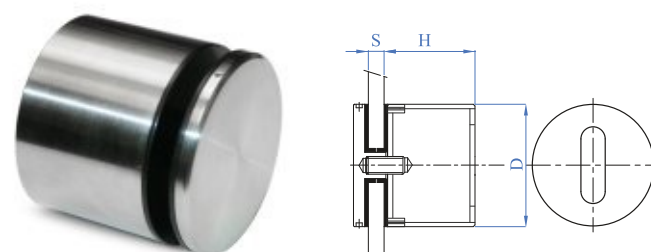
AISI316	H	Diámetro D	Espesor S
100574IN	10 mm	Ø 50 mm	8 - 16,76 mm



AISI316	H	Diámetro D	Espesor S
100581IN	40 mm	Ø 50 mm	8 - 16,76 mm
100582IN	50 mm	Ø 50 mm	8 - 16,76 mm
100583IN	60 mm	Ø 50 mm	8 - 16,76 mm



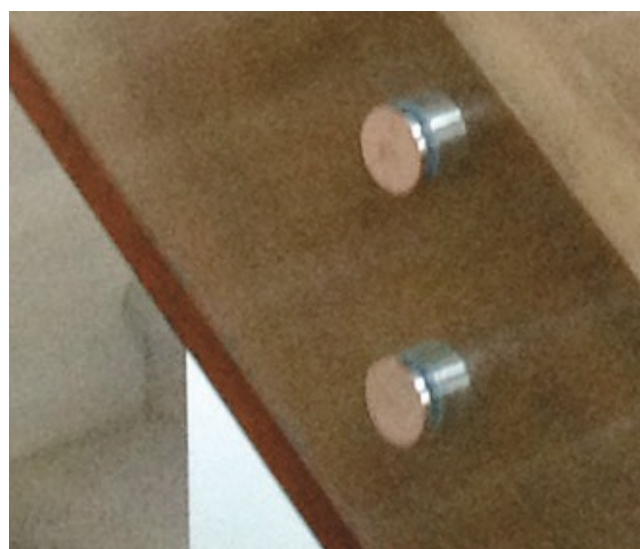
AISI316	H	Diámetro D	Espesor S
100575IN	10 mm	Ø 60 mm	8 - 16,76 mm

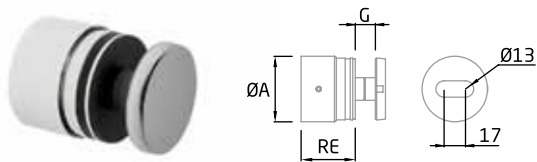


AISI316	H	Diámetro D	Espesor S
100111IN	40 mm	Ø 60 mm	8 - 16,76 mm
100576IN	50 mm	Ø 60 mm	8 - 16,76 mm
100577IN	60 mm	Ø 60 mm	8 - 16,76 mm



AISI304	Métrica	Anclaje madera	Longitud
100112IN	M10	11	100 mm



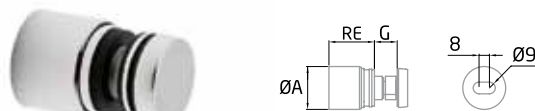


CC-775 D.50 AISI-316

BA SATIN

	Ø	RE	G
2	52	45-50	8-21,52

Regulable.
Adjustable.
Ajustable.

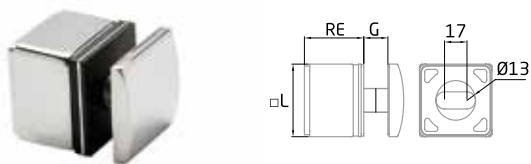


CC-775 D.30 AISI-316

BA SATIN

	ØA	RE	G
2	33	35-40	8-17,52

Regulable.
Adjustable.
Ajustable.

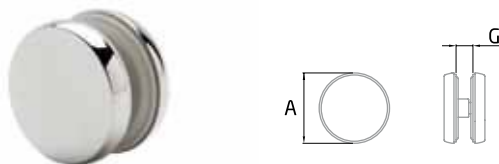


CC-772 AISI-316

BA SATIN

	□ L	RE	G
2	55	45-50	8-21,52

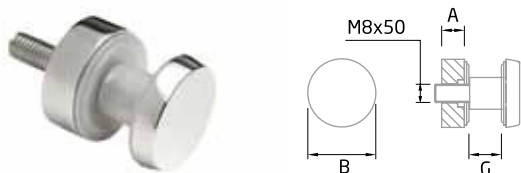
Regulable.
Adjustable.
Ajustable.



CC-735 AISI-316

BA SATIN

	A	G
2	50	(8-13,52)
2	50	(15-21,52)

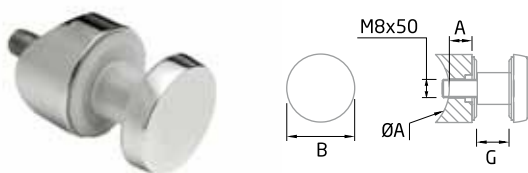


CC-768 AISI-316

BA SATIN

	A	B	G
4	10	30	(6-17,52)

BR-2011 M-8 (Brico Pag. 102)



CC-769 AISI-316

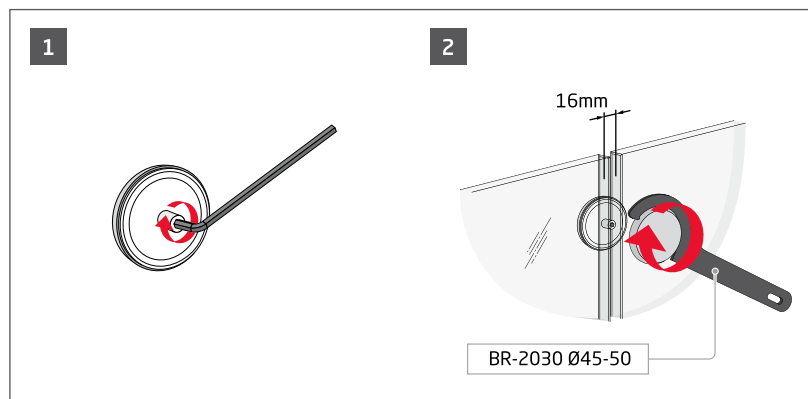
BA SATIN

	ØA	A	B	G
4	43	10	30	(6-17,52)

BR-2011 M-8 (Brico Pag. 102)

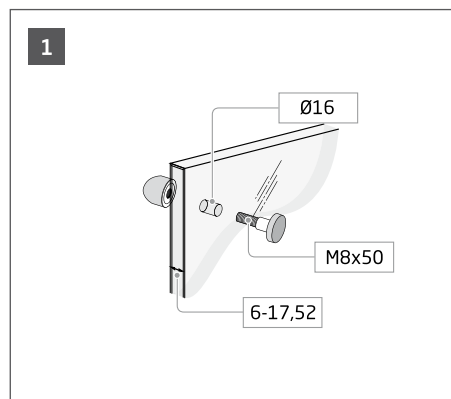


Instalación



CC-735

Instalación



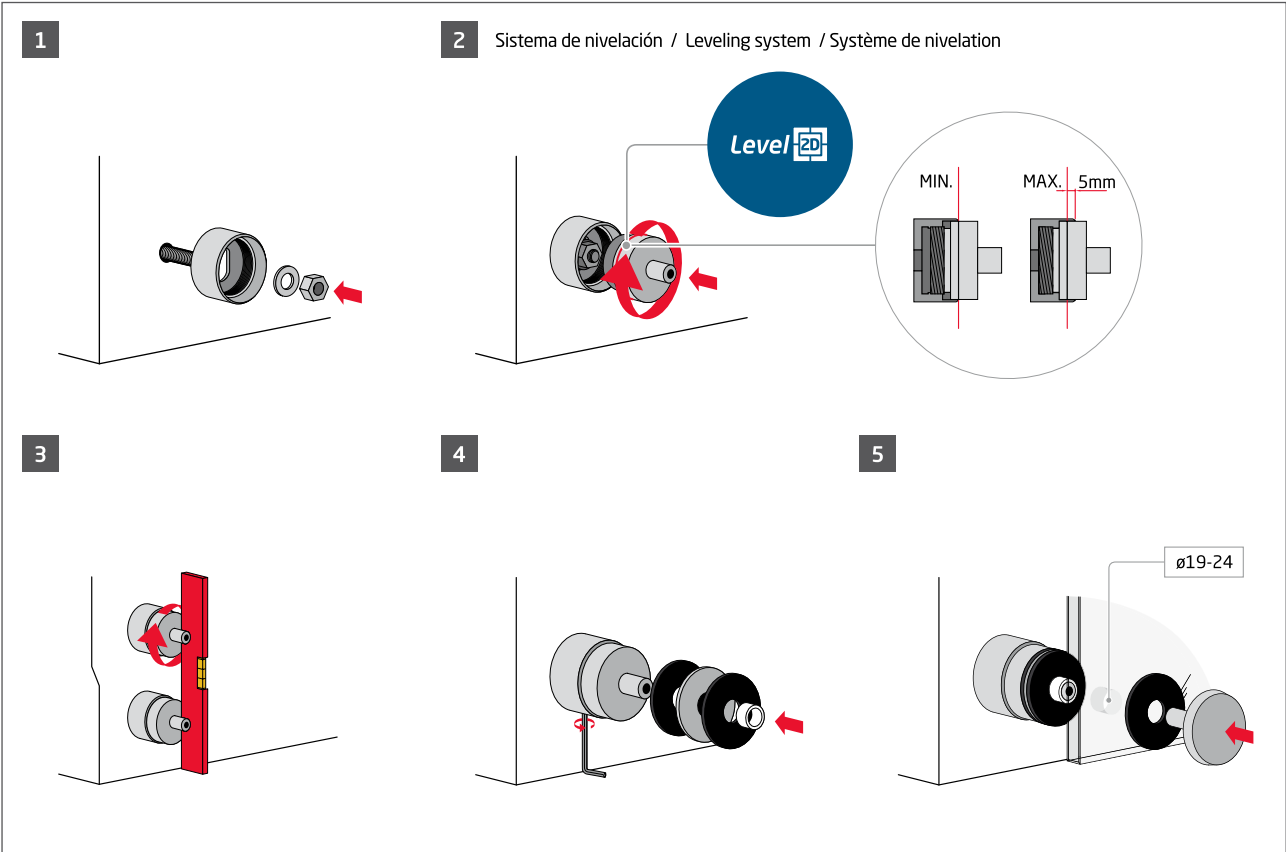
CC-768

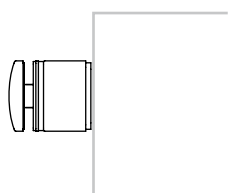
Posibilidades de anclaje CC-775 D.30 / Anchoring possibilities for the CC-775 D.30 / Possibilités d'ancrage CC-775 D.30

C25/30 Uncracked	C25/30 Cracked / Uncracked
FIS VS 300 T M-8 + DIN-975 + DIN 934 + DIN 125 (Brico Pag. 103 / 104)	FIS SB 390 S M-8 + DIN-975 + DIN 934 + DIN 125 (Brico Pag. 103 / 104)

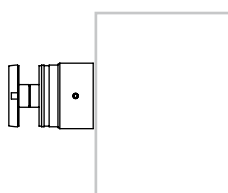
* Cracked / Uncracked
Hormigón Traccionado / Hormigón Comprimido
Béton comprimé / Béton en traction

Sistema de regulación CC-775 / Sistema de regulación CC-775 / Sistema de regulación CC-775

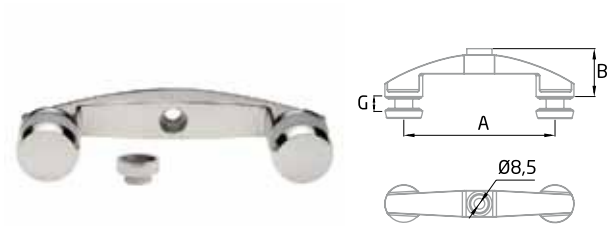




Sistema / System / Système
GlassFit CC-772



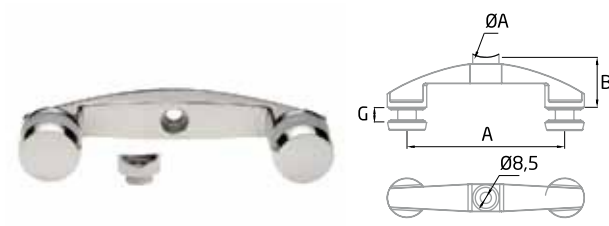
Sistema / System / Système
GlassFit CC-775



CC-759 AISI-316					BA	SATIN
	A	B	G			
2	120	38	(6-17,52)			

DIN-7984 M-8 L-30 (Brico Pag. 134)

BR-2011 M-8 (Brico Pag. 135)



CC-760 AISI-316					BA	SATIN
	ØA	A	B	G		
2	43	120	38	(6-17,52)		

DIN-7984 M-8 L-30 (Brico Pag. 134)

BR-2011 M-8 (Brico Pag. 135)



CC-761 AISI-316					BA	SATIN
	A	B	G			
2	60	38	(6-17,52)			

DIN-7984 M-8 L-30 (Brico Pag. 134)

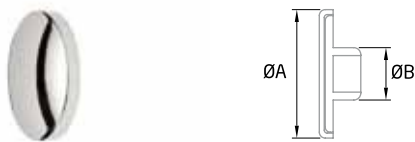
BR-2011 M-8 (Brico Pag. 135)



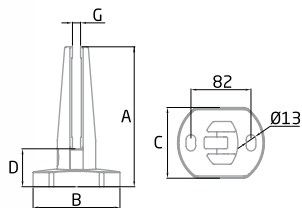
CC-762 AISI-316					BA	SATIN
	ØA	A	B	G		
2	43	60	38	(6-17,52)		

DIN-7984 M-8 L-30 (Brico Pag. 134)

BR-2011 M-8 (Brico Pag. 135)

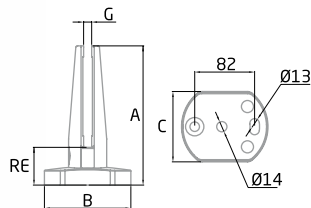


TF-595 AISI-316			BA	SATIN
	ØA	ØB		
16	13	5		



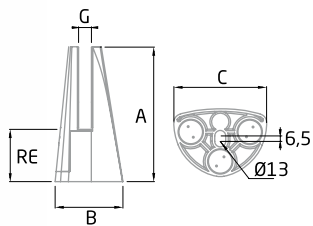
CC-781 AISI-316						BA	SATIN
	A	B	C	D	G		
1	190	118	96	52	12-16,76		

No regulable.
Non adjustable.
Non ajustable.



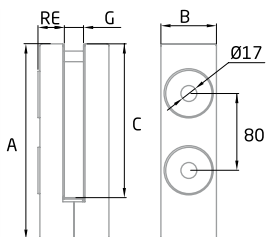
CC-782 AISI-316						BA	SATIN
	A	B	C	RE	G		
1	190	118	96	52-57	12-16,76		

Regulable.
Adjustable.
Ajustable.



CC-780 AISI-316						BA	SATIN
	A	B	C	RE	G		
1	160	80	110	60-65	12-17,52		

Regulable.
Adjustable.
Ajustable.



CC-791 AISI-316						BA	SATIN
	A	B	C	RE	G		
1	203	58	160	27-33	16,38-21,52		

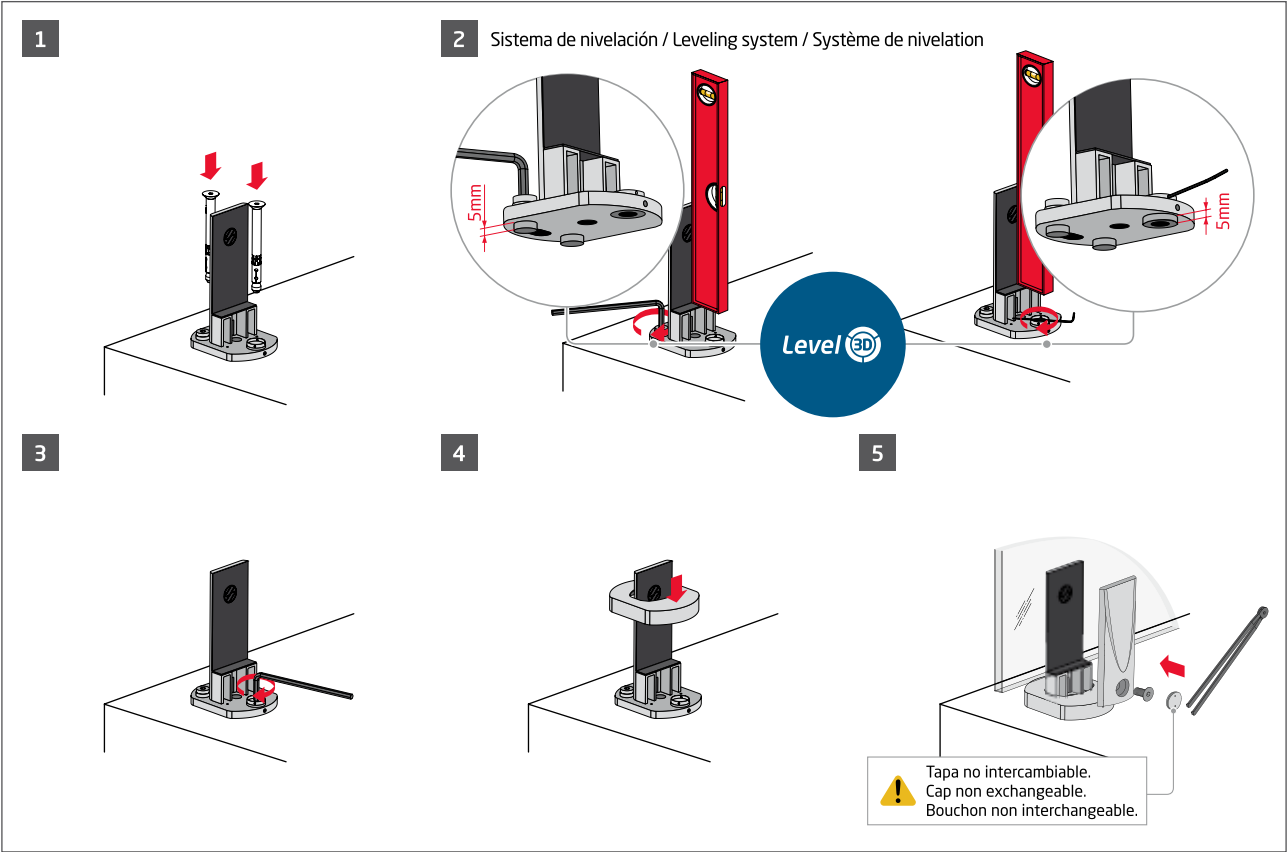
Regulable.
Adjustable.
Ajustable.



BR-2031	
	Ø
1	11 a 60

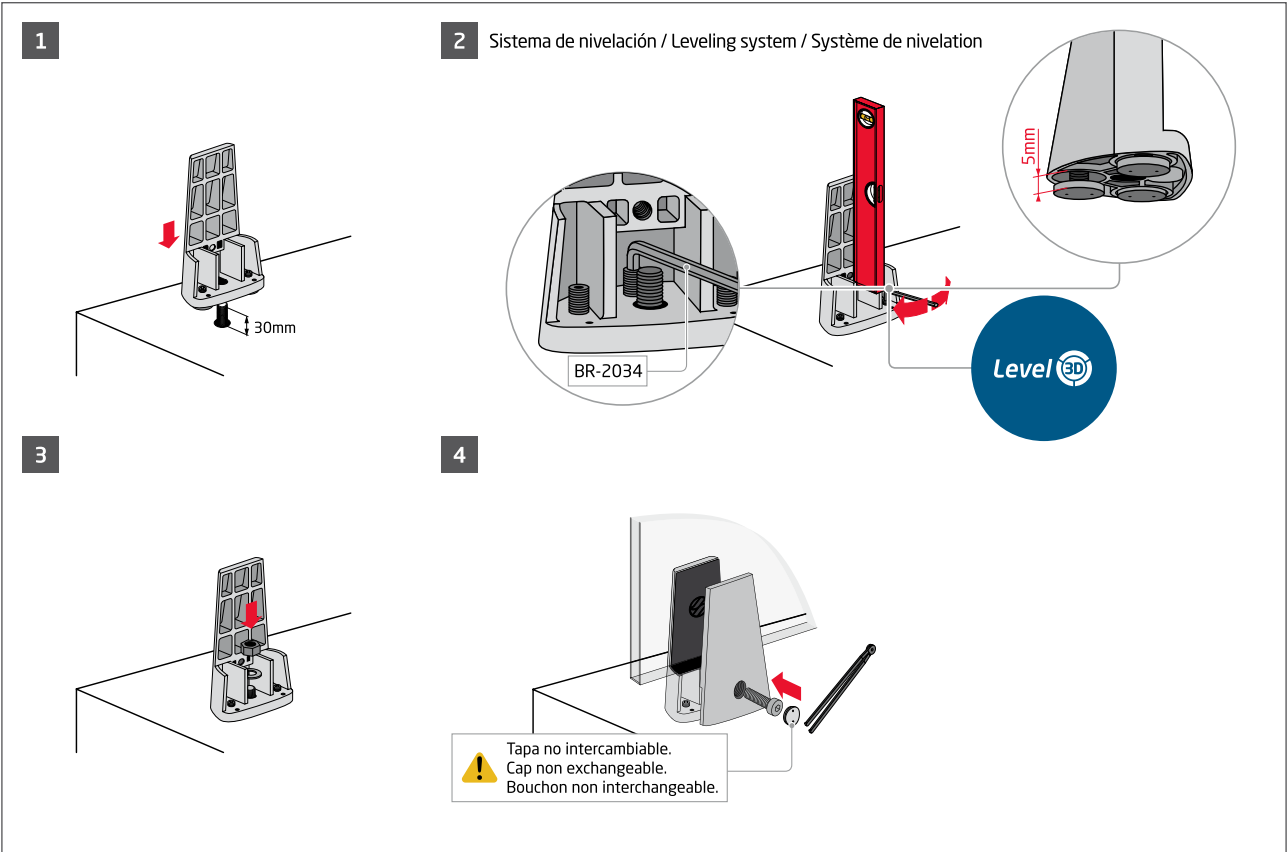
Instalación / Installation / Installation

GlassFit CC-782

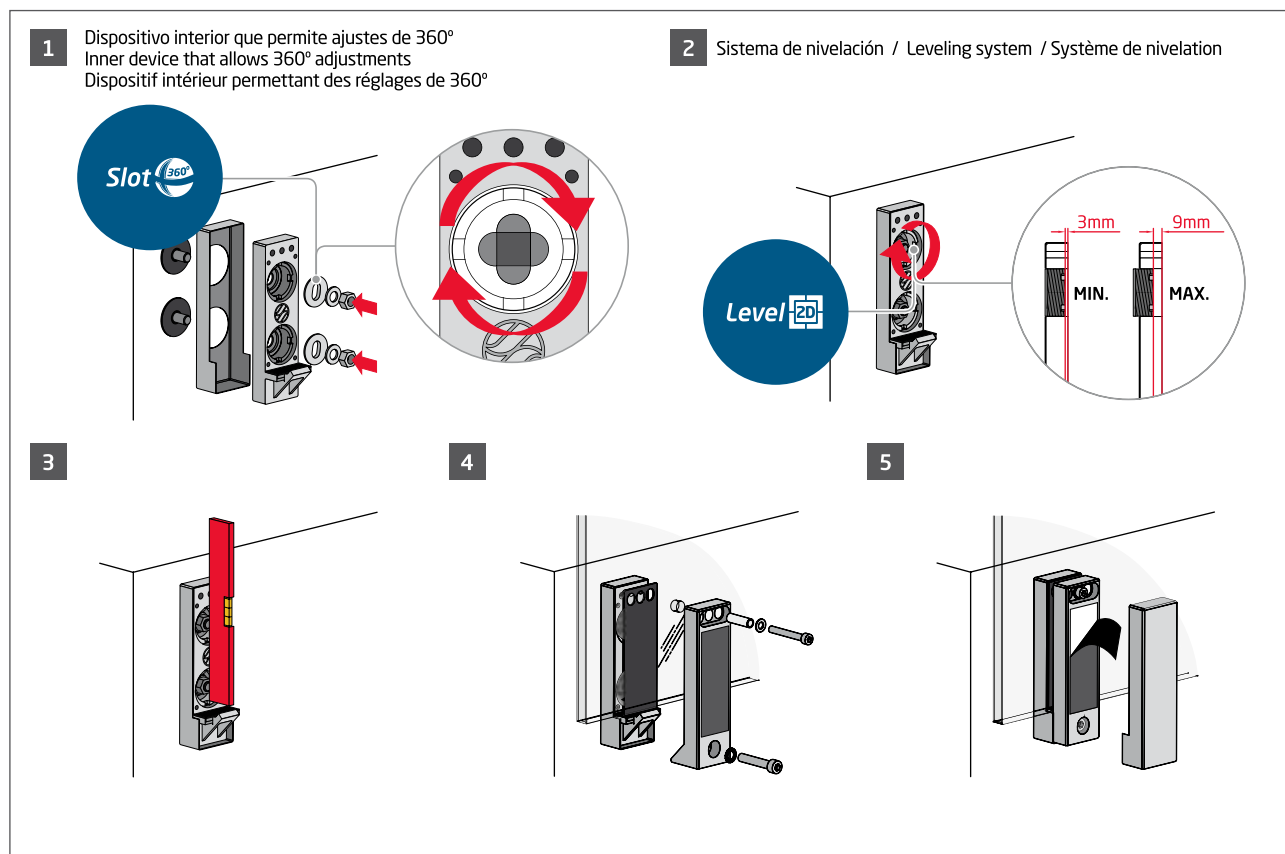


Instalación / Installation / Installation

CC-780



* Sistema nivelador de tres puntos (regula los ejes XYZ) / Three point leveling system (adjust axis XYZ) / Système niveleur trois points (règle les axes XYZ)

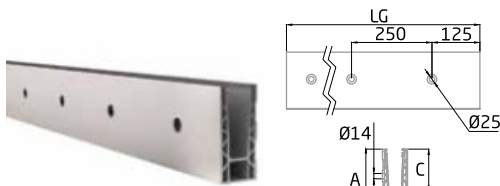




Perfil de drenaje.
Profile for drainage.
Profil de drainage.

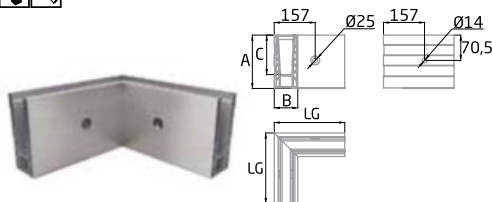
Posibilidades de anclaje SV-1401 / Anchoring possibilities for the SV-1401 / Possibilités d'ancrage SV-1401

	1	2	3
	C25/30 Uncracked	C25/30 Cracked / Uncracked	
1,6 kN/m	FIS VS 300 T M-12 + DIN 975 + DIN 934 + DIN 125 (Brico Pag. 103 / 104)	FIS SB 390 S M-12 + DIN 975 + DIN 934 + DIN 125 (Brico Pag. 103 / 104)	
1 kN/m	FH II S M-8 L-105 ø 12 (Brico Pag. 105)	FIS SB 390 S M-10 + DIN 975 + DIN 934 + DIN 125 (Brico Pag. 103 / 104)	



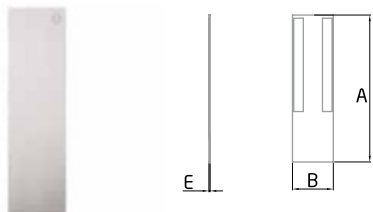
SV-1402 ANODIZED ALUMINIUM

	LG	A	B	C
1	2500	149	66	110
1	5000	149	66	110



SV-1402 C INSIDE ANODIZED ALUMINIUM

	LG	A	B	C
1	282	149	66	110



PM-13 ANODIZED ALUMINIUM

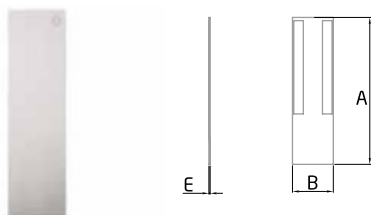
	A	B	E
1	239	67,5	2

SV-1402 con PM-55 (Para tramos en ángulo)
SV-1402 with PM-55 (For sloping sections)
SV-1402 avec PM-55 (Pour des sections inclinés)



*Included

QLTY: Aluminium



PM-19

	A	B	E
1	239	69	2

SV-1402 con PM-56 (Para tramos en ángulo)
SV-1402 with PM-56 (For sloping sections)
SV-1402 avec PM-56 (Pour des sections inclinés)



*Included

QLTY: AISI-316



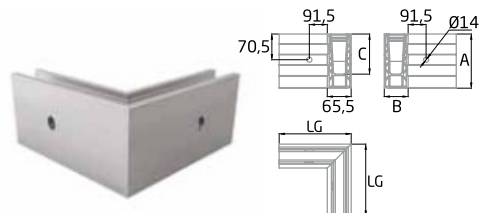
PM-56

	LG	A	B	C	E
2	2500	152	67	16	1,5



*Not Included

QLTY: AISI 316



SV-1402 C OUTSIDE ANODIZED ALUMINIUM

	LG	A	B	C
1	282	149	66	110



PM-12 ANODIZED ALUMINIUM

	A	B	E
1	151	67,5	2

SV-1402 con PM-55 (Para tramos rectos)
SV-1402 with PM-55 (For straight sections)
SV-1402 avec PM-55 (Pour des sections horizontal)



*Included

QLTY: Aluminium



PM-18

	A	B	E
1	151	69	2

SV-1402 con PM-56 (Para tramos rectos)
SV-1402 with PM-56 (For straight sections)
SV-1402 avec PM-56 (Pour des sections horizontal)



*Included

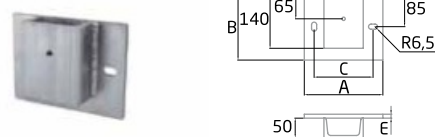
QLTY: AISI-316



PM-55 ANODIZED ALUMINIUM

	LG	A	B	C	E
2	2500	152	66	15	1,5

QLTY: Aluminium

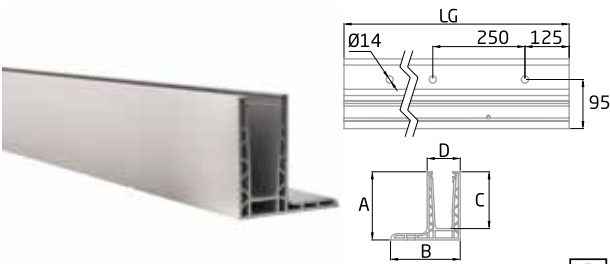


PM-63 ZINC PLATED

	A	B	C	E
1	200	170	150	10

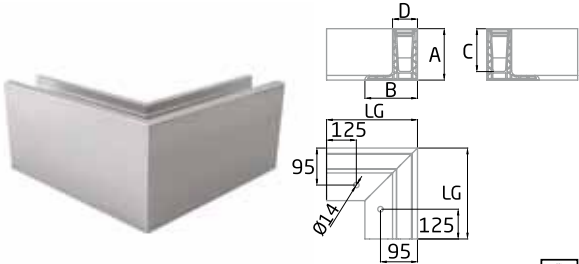
DIN-933 M10 L30 (Brico Pag. 102)





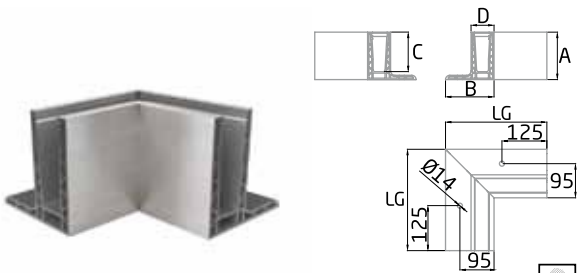
SV-1403 ANODIZED ALUMINIUM

	LG	A	B	C	D
1	2500	132	135	110	64
1	5000	132	135	110	64



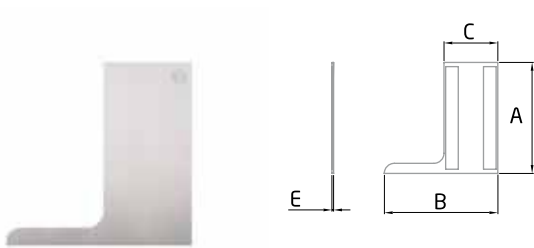
SV-1403 C OUTSIDE ANODIZED ALUMINIUM

	LG	A	B	C	D
1	282	132	135	110	64



SV-1403 C INSIDE ANODIZED ALUMINIUM

	LG	A	B	C	D
1	282	132	135	110	64

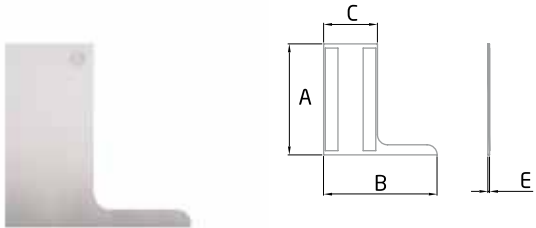


PM-16 ANODIZED ALUMINIUM

	A	B	C	E
1	132	135	64	2



*Included



PM-17 ANODIZED ALUMINIUM

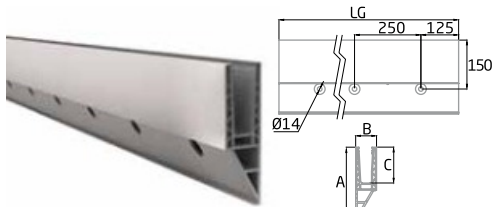
	A	B	C	E
1	132	135	64	2



*Included

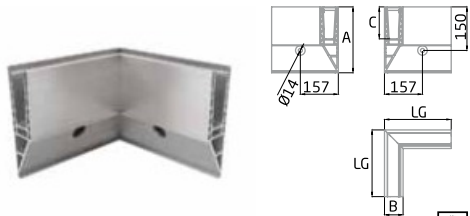
Posibilidades de anclaje SV-1403 / Anchoring possibilities for the SV-1403 / Possibilit  s d'ancrage SV-1403

1	2
C25/30 Uncracked	C25/30 Cracked / Uncracked
FBN II M12 L90 Ø12 (Brico Pag. 105)	FIS SB 390 S M-12 + DIN 975 + DIN 934 + DIN 125 (Brico Pag. 103 / 104)
FIS VS 300 T M10 + DIN 975 + DIN 934 + DIN 125 (Brico Pag. 103 / 104)	



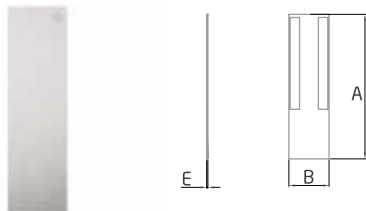
SV-1404 ANODIZED ALUMINIUM

	LG	A	B	C
1	2500	227	64	110
1	5000	227	64	110



SV-1404 C INSIDE ANODIZED ALUMINIUM

	LG	A	B	C
1	282	227	64	110



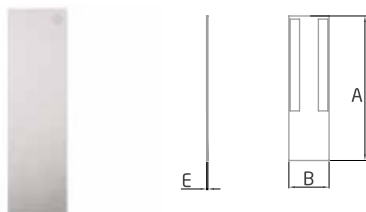
PM-15 ANODIZED ALUMINIUM

	A	B	E
1	358	64	2

SV-1404 con PM-57 (Para tramos en ángulo)
SV-1404 with PM-57 (For sloping sections)
SV-1404 avec PM-57 (Pour des sections inclinées)



*Included



PM-35

	A	B	E
1	358	66,5	2

SV-1404 con PM-58 (Para tramos en ángulo)
SV-1404 with PM-58 (For sloping sections)
SV-1404 avec PM-58 (Pour des sections inclinées)



*Included

QLTY: Aluminium / AISI-316



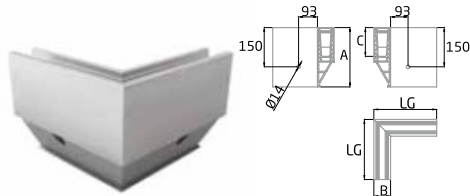
PM-58

	LG	A	B	E
2	2500	230	64	1,5



*Not Included

QLTY: Aluminium / AISI 316



SV-1404 C OUTSIDE ANODIZED ALUMINIUM

	LG	A	B	C
1	282	227	64	110



PM-14 ANODIZED ALUMINIUM

	A	B	E
1	230	64	2

SV-1404 con PM-57 (Para tramos rectos)
SV-1404 with PM-57 (For straight sections)
SV-1404 avec PM-57 (Pour des sections horizontal)



*Included



PM-34

	A	B	E
1	230	66,5	2

SV-1404 con PM-58 (Para tramos rectos)
SV-1404 with PM-58 (For straight sections)
SV-1404 avec PM-58 (Pour des sections horizontal)



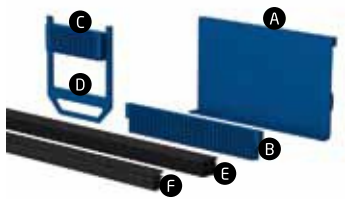
*Included

QLTY: Aluminium / AISI-316



PM-57 ANODIZED ALUMINIUM

	LG	A	B	E
2	2500	98	61	1,5



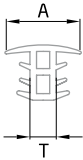
PL-14

G	/A	/B	/C	/D	E (LG)	F (LG)
16,76	10	10	9	9	2500	2500
17,52	10	10	9	9	2500	2500
20,76	10	10	9	9	2500	2500
21,52	10	10	9	9	2500	2500



BR-2039

1



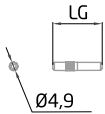
PL-06

	LG	A	T
1	1000	29	16,38-17,52
1	1000	29	20-76-21,52



BR-2041

1



PM-01 ANODIZED ALUMINIUM

	LG
10	30

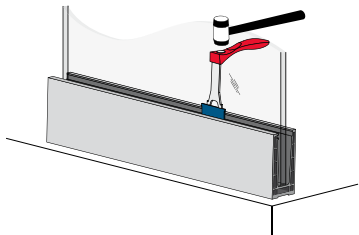
Pin de unión.
Joiner pin.
Boulon d'union.



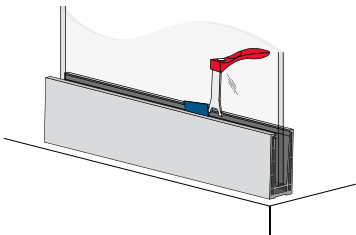
Instalación / Installation / Installation

BR-2039 / BR-2041

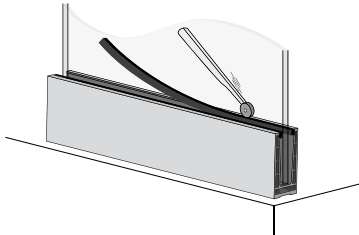
1 BR-2041: Fijación / Fixation / Fixation



2 BR-2041: Extracción / Removal / Enlèvement

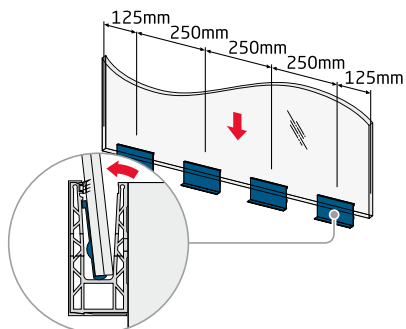


3 BR-2039

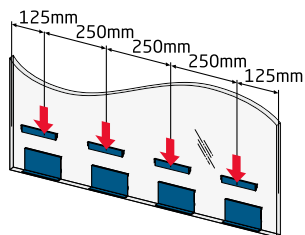


Instalación Level-in. / Level-in installation. / Installation Level-in.

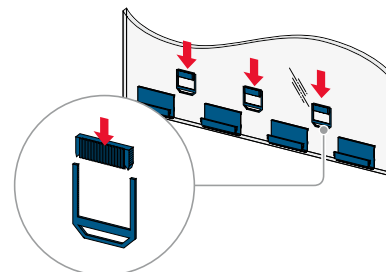
- 1** Colocar el vidrio inclinado hacia el exterior.
Place the glass inclined to the outer side.
Placer le verre incliné vers l'extérieur.



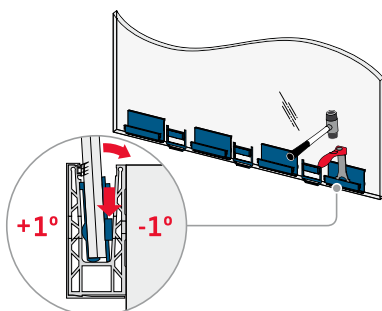
- 2** Colocar Bottom wedge.
Position Bottom wedge.
Placer Bottom wedge.



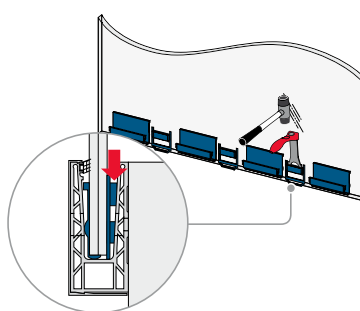
- 3** Colocar Top wedge.
Position Top wedge.
Placer Top wedge.



- 4** Presionar bottom wedge hasta nivelar el vidrio.
Press bottom wedge until the glass is levelled.
Appuyer sur bottom wedge jusqu'à le verre est nivelé.



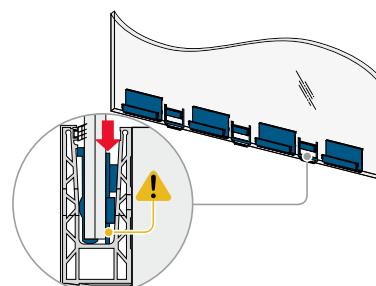
- 5** Presionar top wedge hasta bloquear el vidrio.
Press top wedge until the glass is blocked.
Appuyer sur top wedge jusqu'à le verre est bloqué.

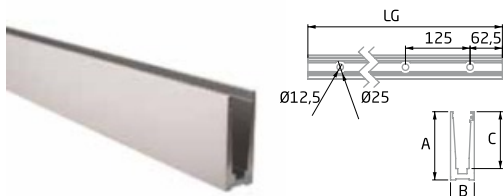


- !** El Dispositivo de seguridad de "Top Wedge" debe hacer tope con la base interior del perfil.

The safety device of "top wedge" must be placed in contact with the inner base of the profile.

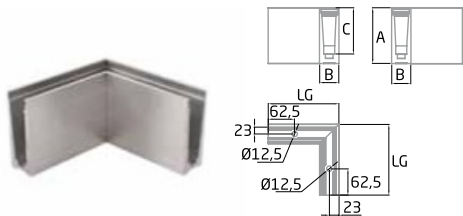
Le dispositif de sécurité de "top wedge" doit être placé en contact avec la base intérieur du profil.





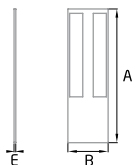
SV-1301-1-1 ANODIZED ALUMINIUM

	LG	A	B	C
1	2500	132	46	110
1	5000	132	46	110



SV-1301-1-1C INSIDE ANODIZED ALUMINIUM

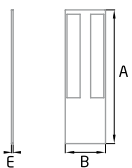
	LG	A	B	C
1	200	132	46	110



PM-25 ANODIZED ALUMINIUM

	A	B	E
1	206	46	2

SV-1301 sin PM-50 (Para tramos en ángulo)
SV-1301 without PM-50 (For sloping sections)
SV-1301 sans PM-50 (Pour des sections inclinés)



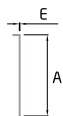
PM-28

	A	B	E
1	210	52	2

SV-1301 con PM-50 (Para tramos en ángulo)
SV-1301 with PM-50 (For sloping sections)
SV-1301 avec PM-50 (Pour des sections inclinés)



QLTY: AISI 316

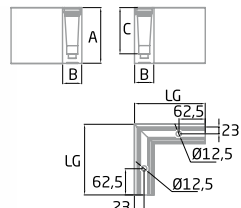


PM-50

	LG	A	E	IN/OUT
2	2500	133	1	IN
2	2500	133	1	OUT

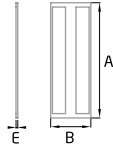


QLTY: AISI-316



SV-1301-1-1C OUTSIDE ANODIZED ALUMINIUM

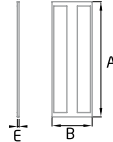
	LG	A	B	C
1	200	132	46	110



PM-24 ANODIZED ALUMINIUM

	A	B	E
1	132	46	2

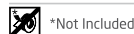
SV-1301 sin PM-50 (Para tramos rectos)
SV-1301 without PM-50 (For straight sections)
SV-1301 sans PM-50 (Pour des sections horizontal)



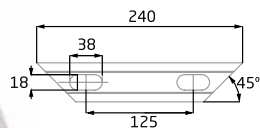
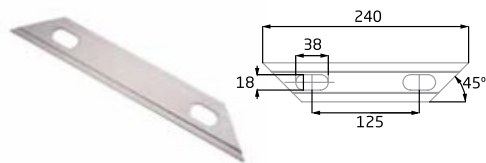
PM-27

	A	B	E
1	133	52	2

SV-1301 con PM-50 (Para tramos rectos)
SV-1301 with PM-50 (For straight sections)
SV-1301 avec PM-50 (Pour des sections horizontal)



QLTY: AISI 316



PM-26 ANODIZED ALUMINIUM

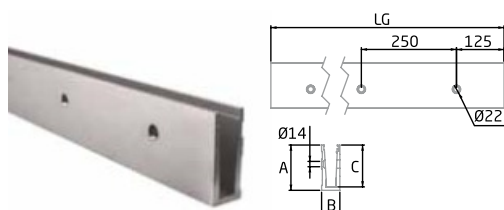
	A	B	E
10			

Perfil de drenaje.
Profile for drainage.
Profil de drainage.



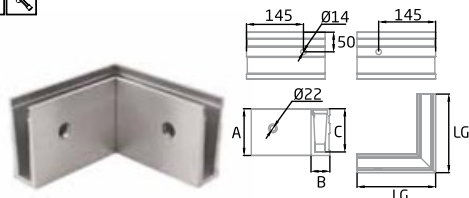
RP-62 (1.2mm)

	A	B	E
1			



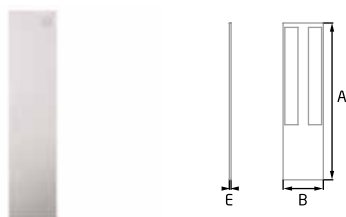
SV-1302-2-1 ANODIZED ALUMINIUM

	LG	A	B	C
1	2500	119	49	110
1	5000	119	49	110



SV-1302-2-1C INSIDE ANODIZED ALUMINIUM

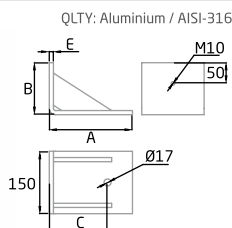
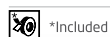
	LG	A	B	C
1	200	119	49	110



PM-30

	A	B	E
1	196	51	2

SV-1302 con PM-52 (Para tramos en ángulo)
SV-1302 with PM-52 (For sloping sections)
SV-1302 avec PM-52 (Pour des sections inclinées)



PM-61 ZINC PLATED

	A	B	C	E
1	200	125	140	10
1	200	150	140	10

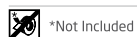
DIN-7991 M10 L20 (Brico Pag. 102)



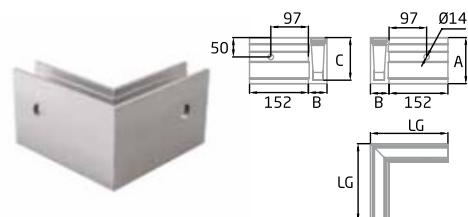
PM-52

	LG	A	B	E
2	2500	124	48	1

Con PM-60
With PM-60
Avec PM-60

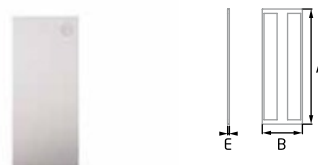


QLTY: Aluminium / AISI 316



SV-1302-2-1C OUTSIDE ANODIZED ALUMINIUM

	LG	A	B	C
1	200	119	49	110



PM-29

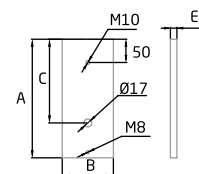
	A	B	E
1	124	51	2

SV-1302 con PM-52 (Para tramos rectos)
SV-1302 with PM-52 (For straight sections)
SV-1302 avec PM-52 (Pour des sections horizontales)



*Included

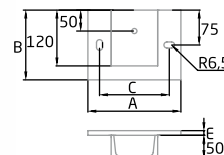
QLTY: Aluminium / AISI-316



PM-60 ZINC PLATED

	A	B	C	E
1	255	110	180	14

DIN-7991 M10 L20 (Brico Pag. 102)



PM-62 ZINC PLATED

	A	B	C	E
1	200	150	150	10

DIN-7991 M10 L20 (Brico Pag. 102)



PM-54

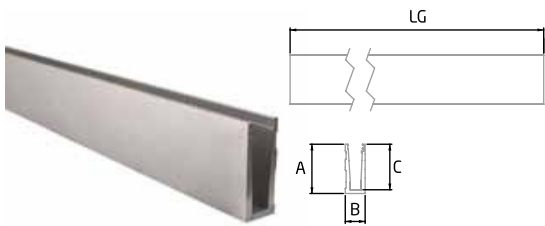
	LG	A	E
2	2500	20	1,3

Con PM-60
With PM-60
Avec PM-60



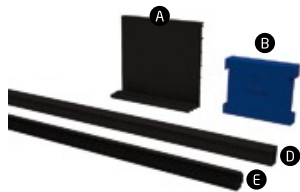
*Not Included

QLTY: Aluminium / AISI 316



SV-1303 RAW ALUMINIUM

	LG	A	B	C
1	2500	119	49	110
1	5000	119	49	110



PL-11

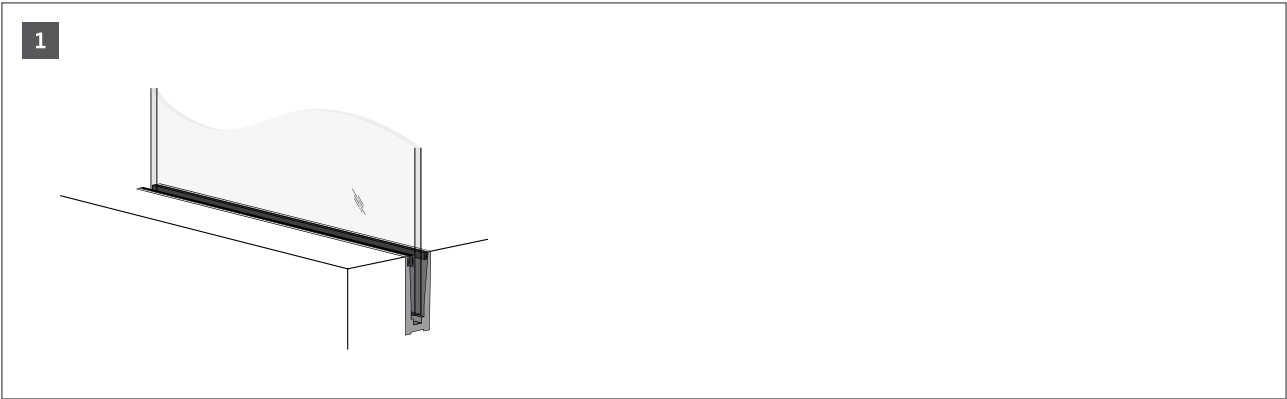
G	/A	/B	D (LG)	E (LG)
12-12,38	10	10	2500	2500
12,76	10	10	2500	2500
13,52	10	10	2500	2500
16,38-16,76	10	10	2500	2500
17,52	10	10	2500	2500
20,38-20,76	10	10	2500	2500
21,52	10	10	2500	2500

El vidrio no necesita ser taladrado. Sistema de fijación con cuñas.
No need to drill glass panels. Fixing Wedge System.
Le verre n’a pas besoin d’être percé. Système de fixation avec des cales.



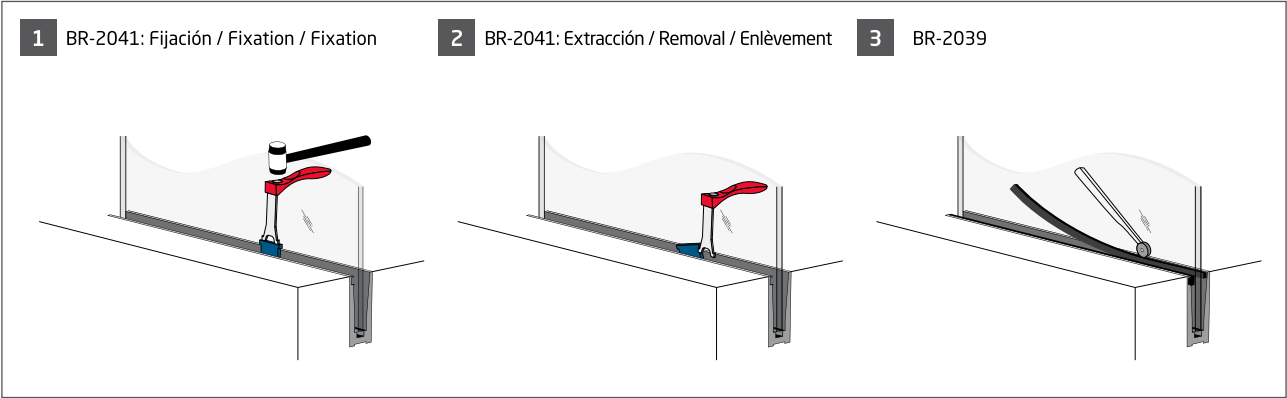
Instalación perfil embutido / Embedded installation / Installation profil encastré

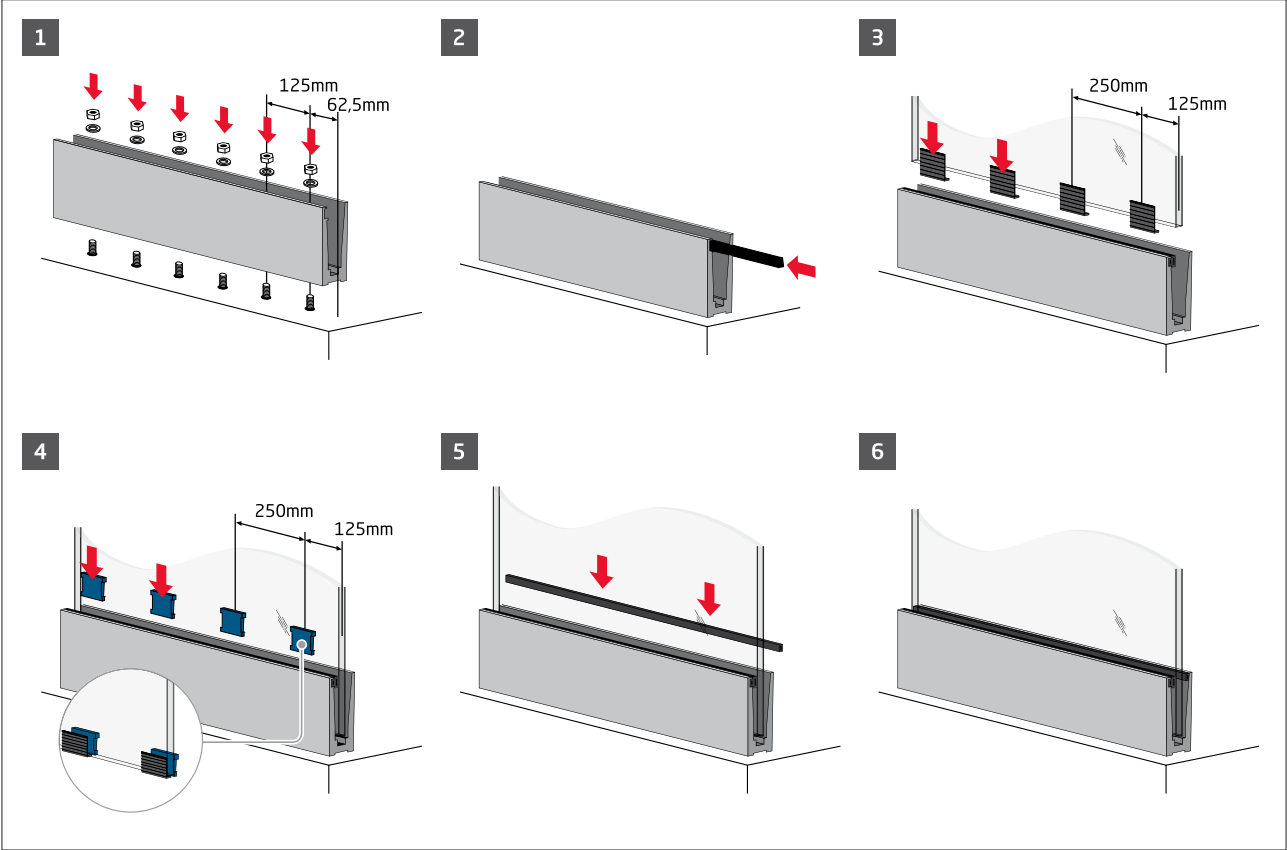
SV-1303

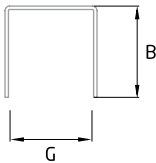
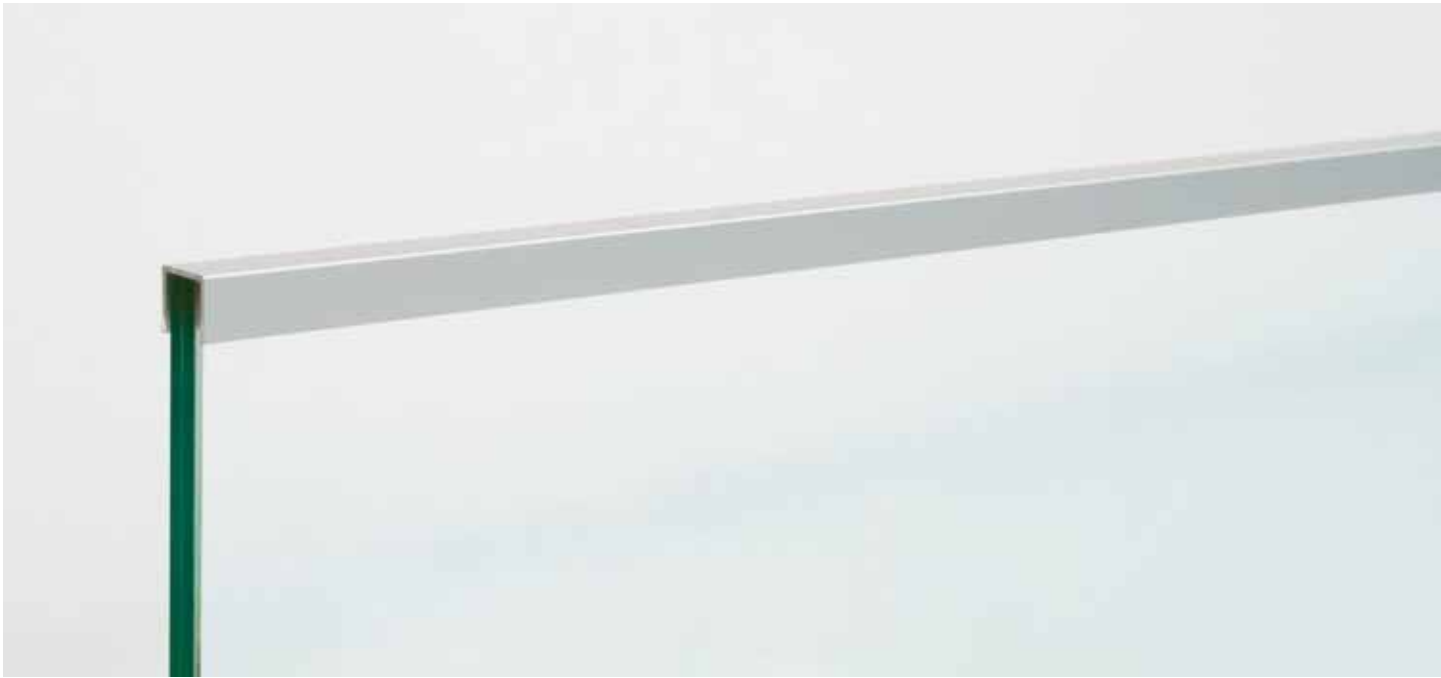


Instalación / Installation / Installation

BR-2039 / BR-2041








SV-1250 ANODIZED ALUMINIUM

LG	G	B	E*
2500	12-12,76	15	1,5
2500	16,38-17,52	20	1,5
2500	20,38-21,52	20	1,5



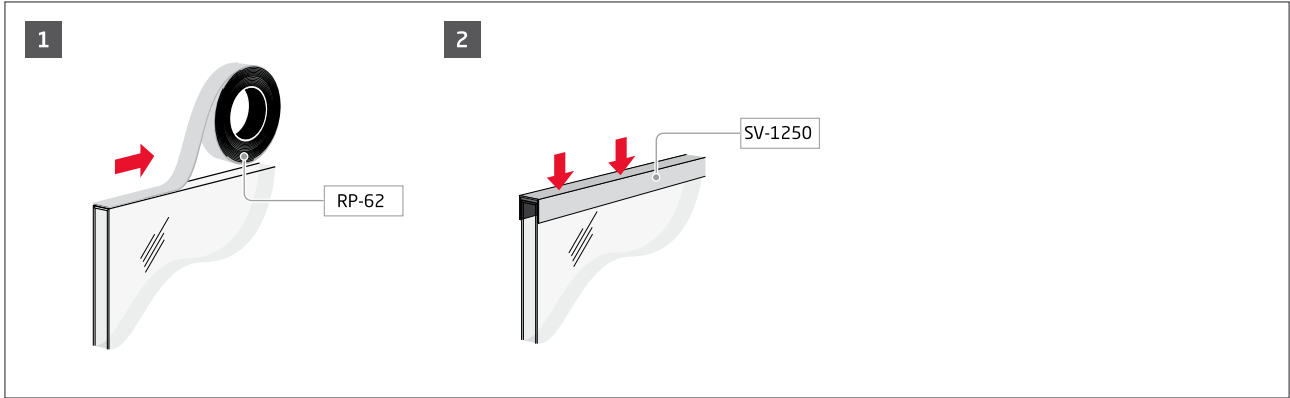
RP-62 (12mm / 33mm)

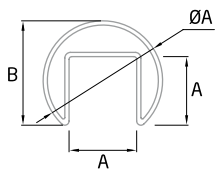


 *Not included

Instalación / Installation / Installation

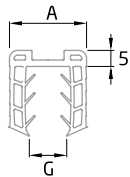
SV-1250





RP-1400 AISI-316

LG	ØA	A	B	E*	BA SATIN	
5000	42,4	24	37	1,5		



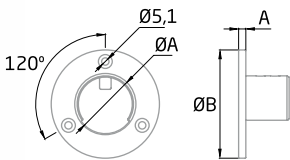
PL-03

LG	A	G
5000	24	8-11,52
5000	24	12-13,52
5000	24	16,38-17,52
5000	24	20,38-21,52



SP-101

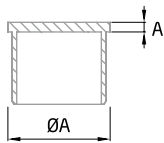
1



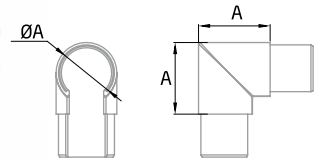
AV-609 AISI-316

	ØA	ØB	A	E*	BA SATIN	
2	42,4	75	5	1,5		

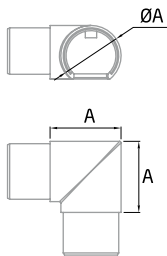




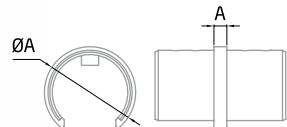
TF-512 AISI-316					BA	SATIN
	$\varnothing A$	A	E*			
2	42,4	3	1,5			



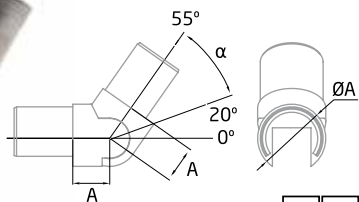
CT-210 AISI-316					BA	SATIN
	$\varnothing A$	A	E*			
2	42,4	50	1,5			



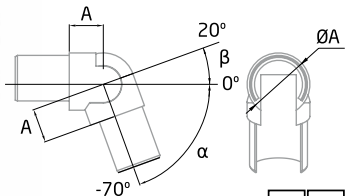
CT-211 AISI-316					BA	SATIN
	$\varnothing A$	A	E*			
2	42,4	50	1,5			



CT-212 AISI-316					BA	SATIN
	$\varnothing A$	A	E*			
2	42,4	4	1,5			

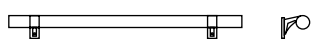
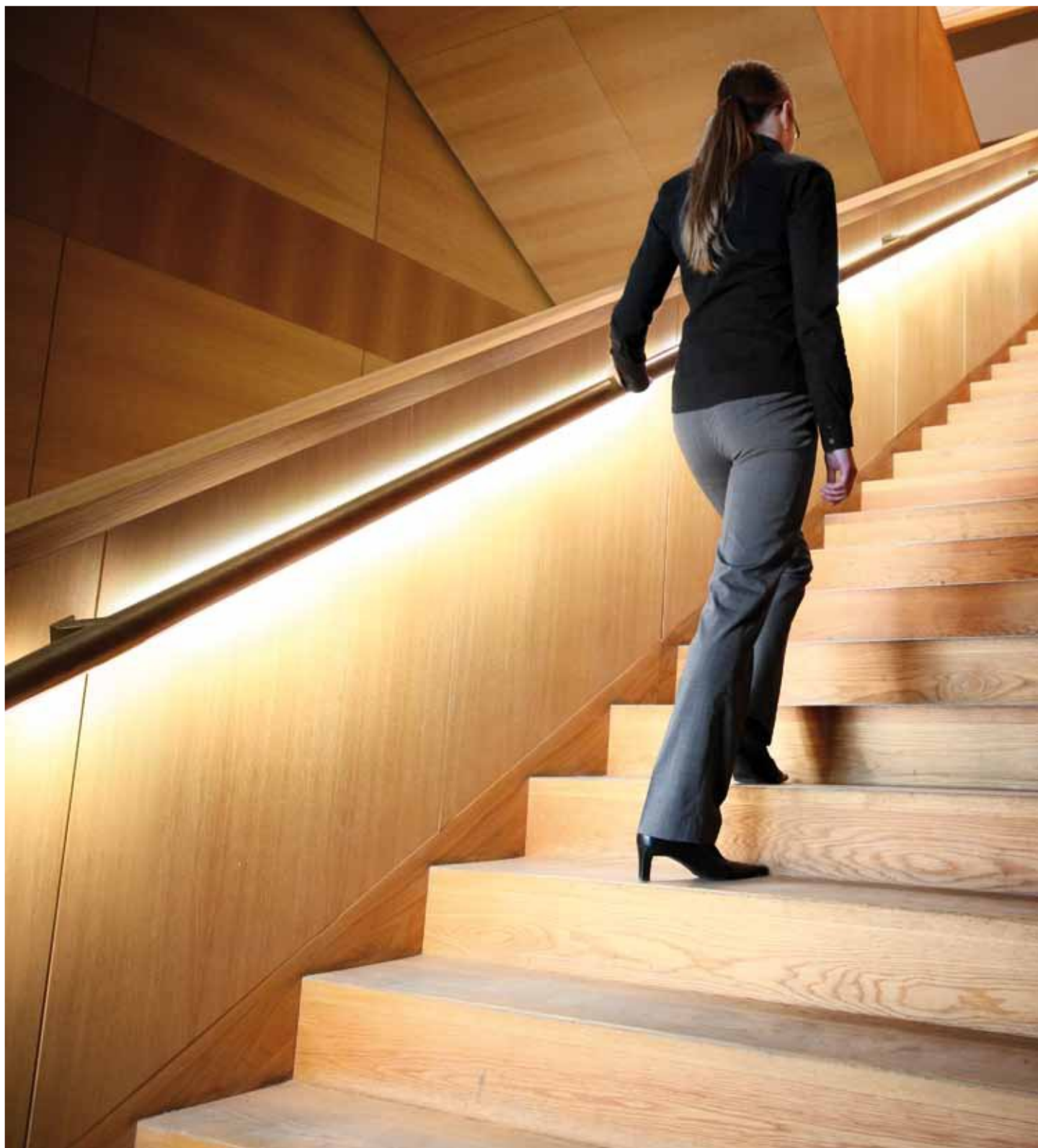


SA-416 AISI-316					BA	SATIN
	$\varnothing A$	A	E*	α		
2	42,4	23	1,5	20-25°		



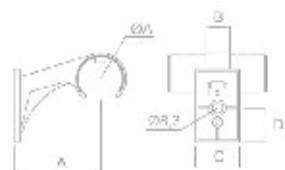
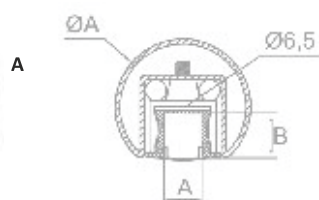
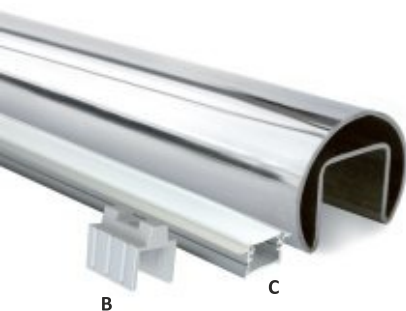
SA-417 AISI-316					BA	SATIN
	$\varnothing A$	A	E*	α	β	
2	42,4	23	1,5	0-70°	0-20°	





Sistema / System / Système




DecoLed



KIT PASAMANOS CON LED

AIS1316	KIT	ØA	A	B	L
100066JF	1	42,4	12,3	14	150 mm
100067JF	1	42,4	12,3	14	200 mm
100068JF	1	42,4	12,3	14	250 mm
100069JF	1	42,4	12,3	14	300 mm
100070JF	1	42,4	12,3	14	750 mm
100071JF	1	42,4	12,3	14	1000 mm

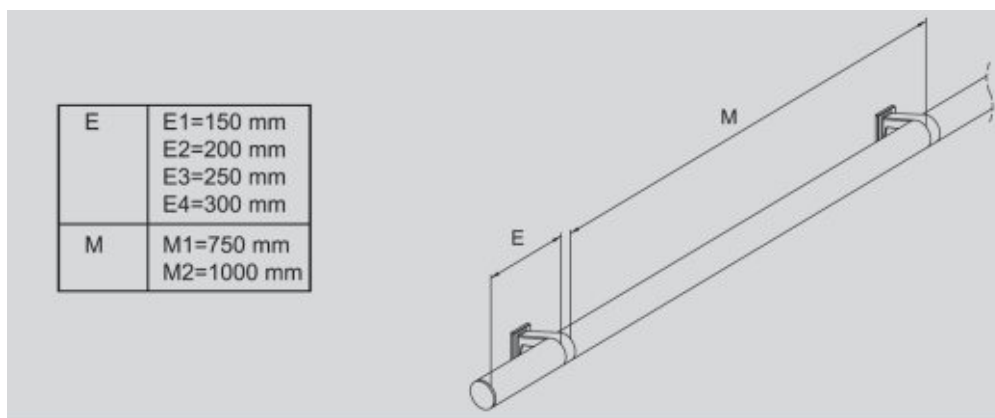
AIS1316	ØA	A	B	C	D
100063JF	42,4	71	20	36	28

1 KIT*:  Slotted tube AISI 304 +  AL-00 +  Aluminium profile and white polycarbonate lens



LED STRIP 12 V. DC. 14,4 W
60 LEDS SMD 5050 IP65 3000 K

Rollo de LED	m/bag	Lm/m	Color
100064JF	5 m	900	Blanco



SP 200 AC/DC Vdc 200 W

Transformador LED	pcs/box
100065JF	1

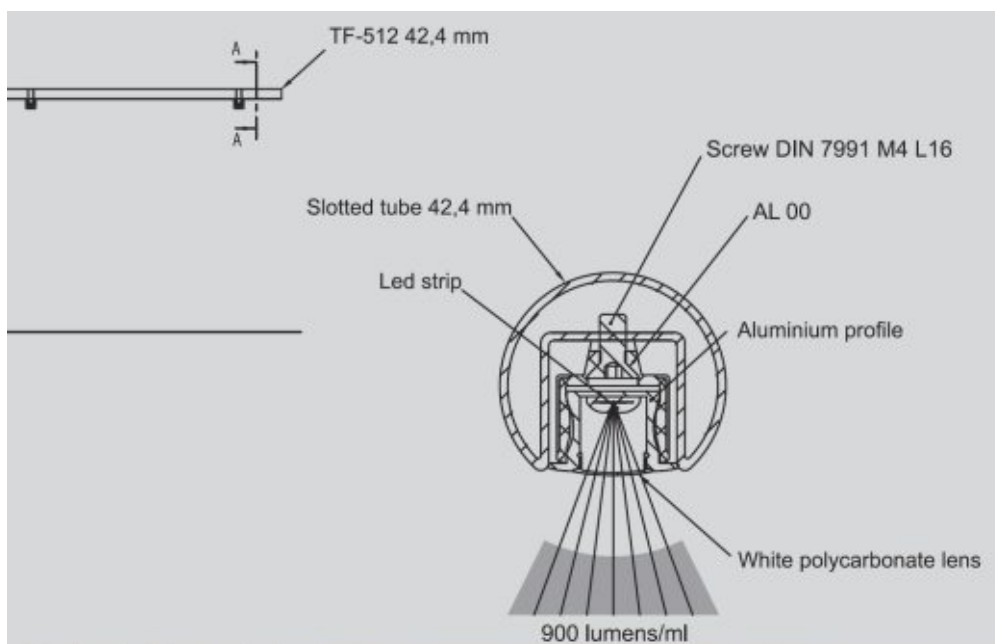




FIG. 1



FIG. 2

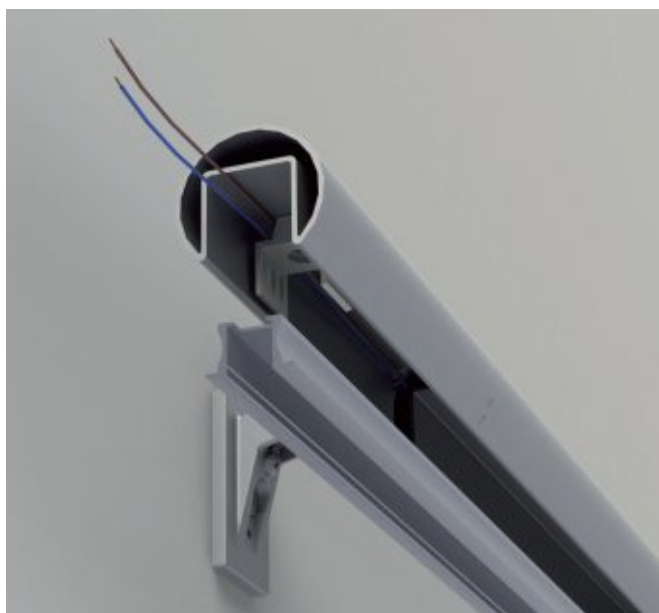


FIG. 3



FIG. 4

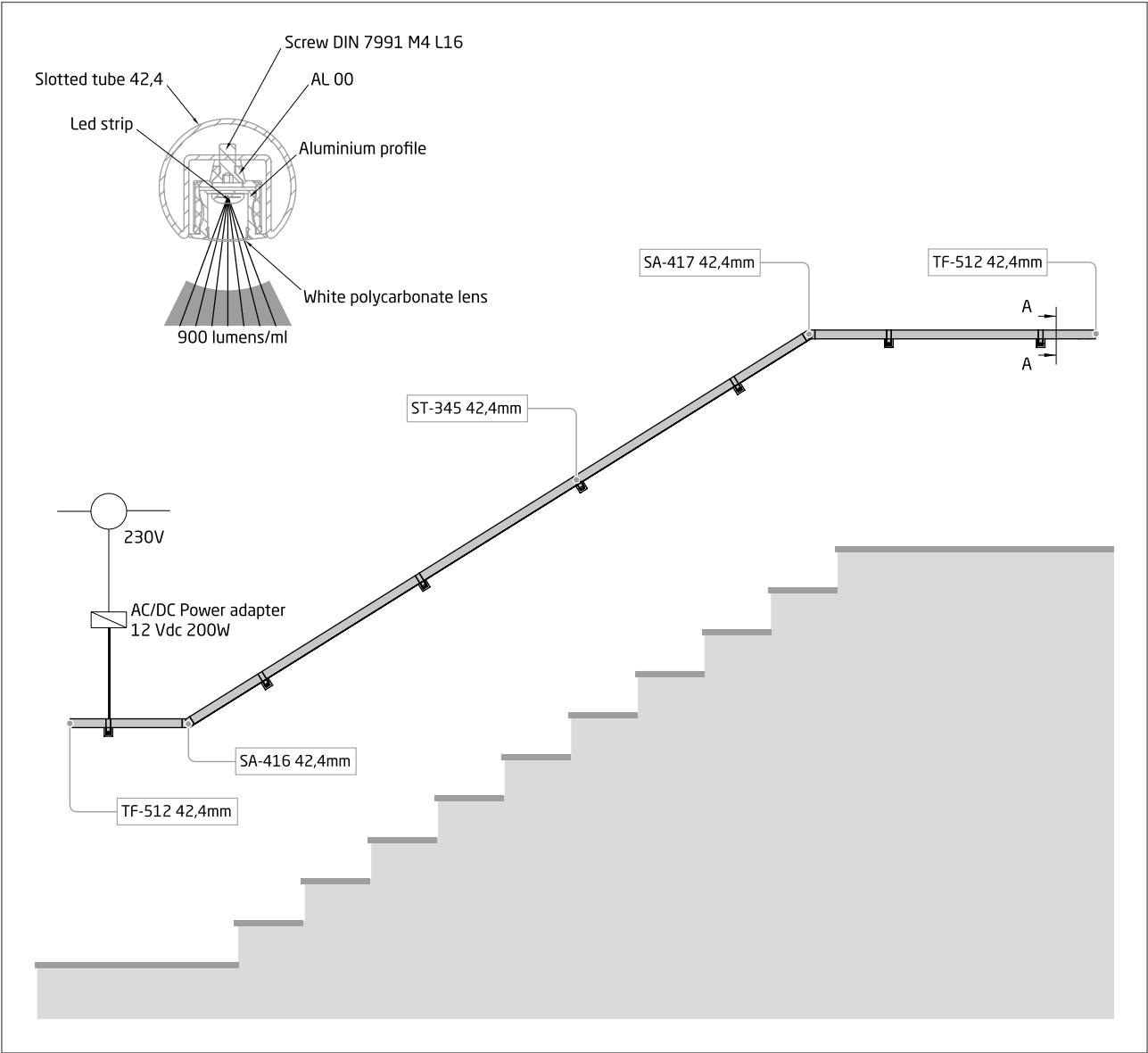


FIG. 5

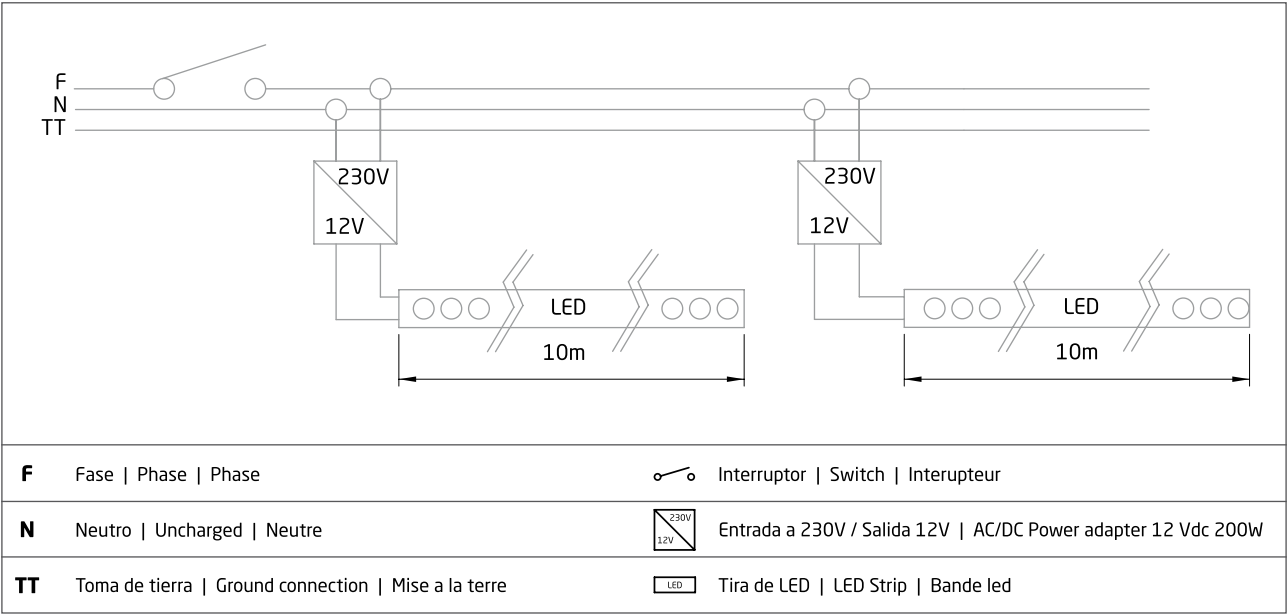


FIG. 6

Posibilidades de suministro de PL-20 / PL-20 Supply possibilities / Possibilités de fourniture PL-20



Esquema de conexionado / Wiring diagram / Schéma de câblage





SC-800 AISI-316			BA	SATIN
	ØC	B		
2	4-5 mm	112		

BR-2011 M-6 (Brico Pag. 135)

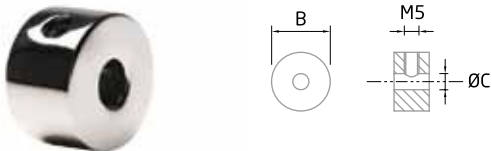
Tensor.
Tensioner.
Tendeur.



SC-801 AISI-316			BA	SATIN
	ØC	B		
2	4-5 mm	71		

BR-2011 M-6 (Brico Pag. 135)

Terminal.
Terminal.
Terminaison.



SC-850 AISI-316			BA	SATIN
	ØC	B		
2	4-5 mm	20		

Stopper.

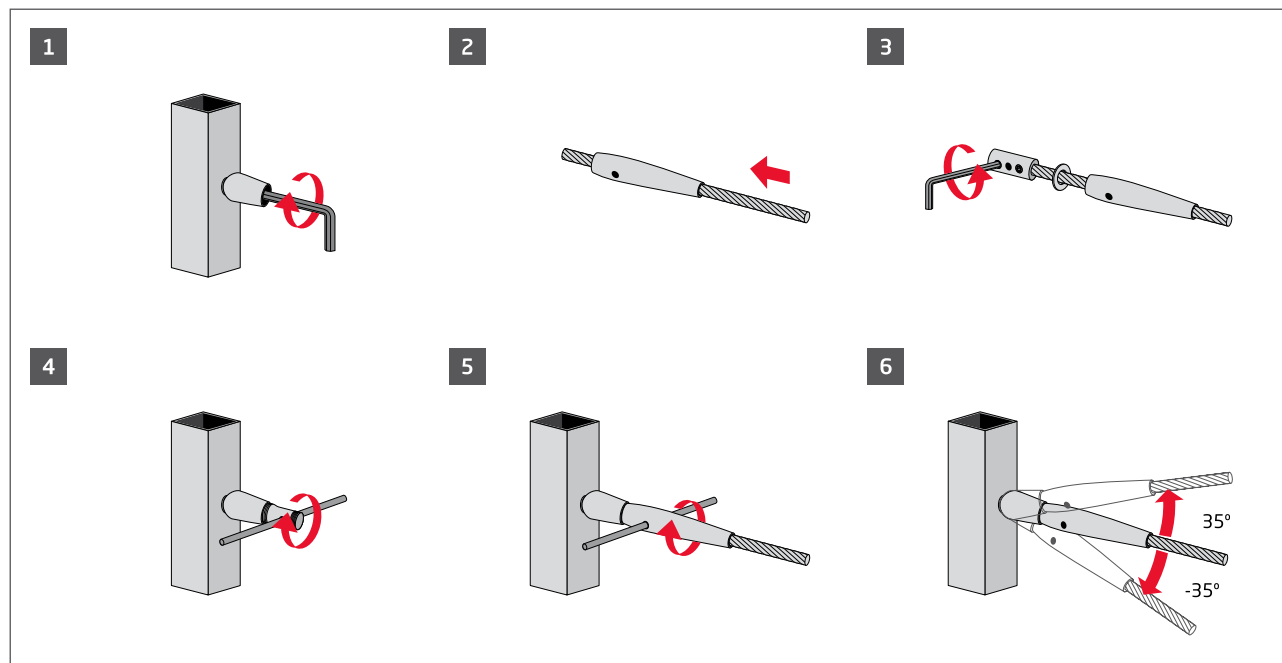


7 + 7 + 0 semi-flexible

RP-1460		
ØC	L	
4	Consultar / Inquire / Consulter	
5	Consultar / Inquire / Consulter	

Instalación / Installation / Installation

SC-800 / SC-801

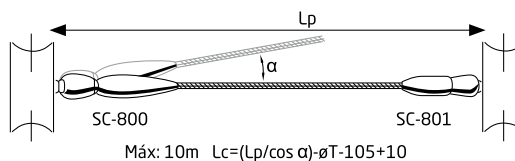
Ver video de instalación en / Watch installation video at / Voir video d'installation à www.comenza.com

Recomendaciones / Recommendations / Recommendations

Cable Recomendado.
Recommended wire.
Câble recommandé.



7+7+0 semi-flexible



Lc: Longitud del cable / Cable Length / Longueur câble

Lp: Longitud entre centros de pilares / Length between pillar centers / Longueur entre les centres des piliers

øT: ø tubo / ø tube

(Los datos reflejados están basados en ensayos realizados con cálculo elementos finitos y verificados en nuestras instalaciones con ensayos físicos. Es responsabilidad del usuario establecer la idoneidad de la información facilitada con el uso particular que vaya a realizar del producto)

(The data indicated are based on tests conducted by finite element calculation and checked at our facilities with physical tests. The user is responsible of determining the adequacy of the information provided to the particular use of the product)

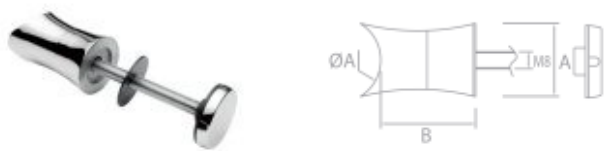
(Les informations présentes s'appuient sur des tests réalisés par calcul par éléments finis et vérifié par au sein de nos installations par de essais physique. Il incombe à l'utilisateur de définir le bien fondé de l'information fournie et de la recouper en fonction de l'usage qu'il fera lui-même du produit)



AISI316	ØA	A	B
100057JF	40 mm	21 mm	40 mm
100058JF	Ø38,1 mm	21 mm	40 mm



AISI316	ØA	A	B
100059JF	Ø40 mm	21 mm	40 mm
100060JF	Ø38,1 mm	21 mm	40 mm



AISI316	ØA	A	B
100061JF	Ø40 mm	44 mm	34 mm



AISI316	ØA	A	B
100059JF	Ø40 mm	44 mm	34 mm





Expositor Modelo Madrid
Ref. 100047JF



Expositor Tirador
Ref. 100048JF



Expositor Pinzas
Ref. 100049JF



Expositor Modelo Mabella
Ref. 100050JF



Expositor Modelo Málaga
Ref. 100051JF



Expositor Modelo Andalucía
Ref. 100052JF



Expositor Modelo Torremolinos
Ref. 100053JF



Expositor Modelo Ceuta
Ref. 100054JF




Expositor Modelo Valencia
Ref. 100055JF



Expositor Modelo San Pedro de A.
Ref. 100056JF



Fast-Fix Glue A+B (50+50ml) *

 1 kit				
Duración aproximada / Estimated duration / Duration aproximative				
ø50,8	ø43	ø38,1	ø20	ø12
40	50	60	120	150

Características FAST-FIX GLUE

- Envase bicomponente A+B
- Velocidad de curado:
Curado inicial 30 segundos / 50% sujeción 45 min / 100% sujeción 24h.
- Cubre holguras de hasta 0,3 mm
- Cantidad: 50+50ml
- Temperatura de conservación: 15°-25°

FAST-FIX GLUE characteristics:


- A+B Bi-component packaging
- Drying speed:
Initial curing 30 seconds / 50% bonding 45 min / 100% bonding 24h.
- Provides coverage for gaps up to 0,3 mm.
- Quantity: 50+50ml
- Storage temperature: 15-25°

Caractéristiques FAST-FIX GLUE

- Flacon bicomposant A+B.
- Vitesse de séchage:
Fixation initiale 30 secondes / 50% fixation 45 min / 100% fixation 24h.
- Remplissage de dégagements jusqu'à 0,3 mm
- Quantité: 50ml + 50ml
- Température de stockage: 15-25°



BR-2000

	Ref.	Glass
2	CC 700/701 (6/8)	6 mm
2	CC 700/701 (6/8)	8 mm
2	CC 700/701 (8/10)	8 mm
2	CC 700/701 (8/10)	10 mm
2	CC 700/701 (10/12)	10 mm
2	CC 700/701 (10/12)	12 mm
2	CC 702/703 (10/12)	10 mm
2	CC 702/703 (10/12)	12 mm
2	CC 720/721 (8/10)	8 mm
2	CC 720/721 (8/10)	10 mm
3	CC 750/751 (8/10)	8 mm
3	CC 750/751 (8/10)	10 mm
3	CC 752/753 (10/12)	10 mm
3	CC 752/753 (10/12)	12 mm
3	CC 750/751 (6/8)	6 mm
3	CC 750/751 (6/8)	8 mm



SUVISUR



SUMINISTROS PARA EL VIDRIO DEL SUR, S.L.
Pol. Ind. "Los Jarales" - Urbanización Linaves, 3
23700 Linares (Jaén) Spain
Tel. (+34) 953 602 064
Tel. y Fax: (+34) 953 602 065
info@suvisur.com | www.suvisur.com